

Session B

Begins on Thursday, September 10, 2015 at 15:30 PDT

China

Ancient China

556. **ANCIENT CHINA:** LOT of 11 *ban liang*, 7 *wu zhu*, 2 *da quan wu zhu*, 1 *xiao quan zhi yi*, 4 *huo quan*, 2 *zhi bai wu zhu*, 1 *chang ping wu zhu*, 1 *bu quan*, 1 *wu xing da bu*, plus two burial coin-like items and one bone cowrie, includes many scarce and better coins, nearly all attributed and worked up in 2x2 holders, above average quality, retail value \$400, **lot of 32 coins** \$200 - 300
557. **ANCIENT CHINA:** LOT of 4 pieces of **spade money** including: Warring States Period 350-250 BC, flat handle square footed spade, *an yang* type (2) VF; another *ping yang* VF; and Xin Dynasty Wang Mang *huo pu* spade, VF-EF, retail value \$175, **lot of 4 spades** \$100 - 150
558. **ANCIENT CHINA:** LOT of 6 coins including: **H-9.60** *huo quan* biscuit *bing* type VF, **H-10.2** *wu zhu* variety with extra partial *zhu* on reverse F, **H-11.15** *zhi bai* small size variety, **H-11.27** *ding ping zhu bai* variety with *zhu* replacing *yi*, likely a local issue F, **H-13.6** *xiao jian / si zhu* small size variety VF, **H-13.14** *xiao jian* F-VF, nice group of early cash coins, retail value \$150, **lot of 6 coins** \$75 - 100



559. **ZHOU: Anonymous**, 600-400 BC, AE knife money (15.92g), H-4.16, pointed tip type, archaic character *liu* (six), choice VF ex *Wéiduoliya* Collection \$125 - 175

Issued during the Spring and Autumn through the early Warring States periods.

Photo size reduced.



560. **ZHOU: State of Yan**, 600-400 BC, AE knife money (13.65g), H-4.27, pointed tip type, archaic character *shang*, couple tiny natural casting holes, F-VF \$100 - 150

Photo size reduced.



561. **ZHOU: State of Yan**, 600-400 BC, AE knife money (15.91g), H-4.32, pointed tip type, undeciphered archaic character, minor tooling to remove encrustation, F-VF \$100 - 150

Photo size reduced.

562. **ZHOU:** LOT of 25 ancient Chinese money, **cowrie shells** with centers carved out (5), imitation cowrie shells in bone (5 one broken), **burial items** in clay (4), in green 'jade' (1), in stone (2), in mother of pearl perhaps (1), in bronze (2), **'ant nose' money** *yi bi qian* (5), average quality, retail value \$125, **lot of 25 items** \$75 - 100

563. **ZHOU/WARRING STATES:** LOT of 2 early knives, the prototypes for later knife money including; 270mm x 34mm large bronze knife, couple very minor chips on blade, attractive patination; and 130mm x 18mm rounded blade knife with brown patina, a nice pair of early Chinese antiquities, retail value \$300, **lot of 2 items** \$150 - 250



564. **WARRING STATES: State of Liang**, ca. 400-300 BC, AE spade money (24.94g), H-3.10, flat-handled spade, *an yi yi jin* in archaic script, nice patina, VF *ex Jiujinshan Collection* \$275 - 325



565. **WARRING STATES: State of Liang**, 400-300 BC, AE spade money (14.39g), H-3.46, flat handle arch foot spade, *liang jin dang lie* etc., multiple translations have been proposed for this type, pleasant olive hued patina, minor breakage on feet, EF *ex Dan Bloxsum Collection* \$400 - 600



566. **WARRING STATES: State of Liang**, 400-300 BC, AE spade money (27.87g), H-3.48, flat handle spade, multiple translations have been proposed for the obverse inscription, minor chip at top, VF, *ex Dan Bloxsum Collection* \$500 - 700



567. **WARRING STATES: State of Liang**, 400-300 BC, AE spade money (28.31g), H-3.48, flat handle spade, *liang zheng jin wu shi (er) dang lei* in archaic script, light green patination, VF \$400 - 500



568. **WARRING STATES: State of Liang**, 400-300 BC, AE spade money (12.06g), H-3.48, arched foot spade, *an yi yi jin* ("City of] Anyi, [value] one jin") in archaic script, broken right foot, VF, **S** *ex Dan Bloxsum Collection* \$175 - 225



569. **WARRING STATES: State of Liang**, 400-300 BC, AE spade money (13.08g), H-3.48, arched foot spade, *an yi yi jin* ("[City of] Anyi, [value] one jin") in archaic script, Very Good, S ex *Dan Bloxsom Collection* \$125 - 175



572. **WARRING STATES: State of Zhao**, 350-250 BC, AE spade money (5.03g), H-3.104, pointed foot spade, *ping tao* in archaic script, a lovely example! EF, S ex *Dan Bloxsom Collection* \$100 - 150



570. **WARRING STATES: State of Zhao**, 350-250 BC, AE spade money (5.53g), H-3.63, pointed foot spade, *da yin* in archaic script, a lovely example! EF, S ex *Dan Bloxsom Collection* \$100 - 150



573. **WARRING STATES: State of Zhao**, ca. 350-250 BC, AE spade money (6.61g), H-3.111, flat handle pointed foot spade type, *wu ping* in archaic script, F-VF, ex *Jiujinshan Collection* \$70 - 90



571. **WARRING STATES: State of Zhao**, ca. 350-250 BC, AE spade money (6.23g), H-3.69, flat handle pointed foot spade type, *wu ping* in archaic script, VF, ex *Jiujinshan Collection* \$80 - 120



574. **WARRING STATES: State of Zhao**, ca. 350-250 BC, AE spade money (6.01g), H-3.112, flat handle pointed foot spade type, *wu ping* in archaic script, *er* ("two") on reverse, F-VF ex *Jiujinshan Collection* \$80 - 120



575. **WARRING STATES: Zi Clan**, 350-250 BC, AE spade money (6.59g), Central Shanxi Province, H-3.143, flat handle pointed foot spade type, *zi* in archaic script, Good
ex *Wéiduoliya Collection* \$75 - 100



578. **WARRING STATES: State of Zhao**, 350-250 BC, AE spade money (5.89g), H-3.155var, flat handle pointed foot spade money, small flan type, *shang ping* in archaic script, VF \$100 - 150



576. **WARRING STATES: State of Zhao**, ca. 350-250 BC, AE spade money (6.65g), H-3.145/6, flat handle pointed foot spade type, *wu ping* in archaic script, tiny chip at top left, Fine
ex *Jiùjīnshān Collection* \$60 - 80



579. **WARRING STATES: State of Liang/Han**, ca. 350-250 BC, AE spade money (8.41g), H-3.174, flat handle square cornered spade type, *chui* in archaic script, partial green patina with minimal deposits, VF, ex *Jiùjīnshān Collection* \$150 - 200



577. **WARRING STATES: State of Zhao**, 350-250 BC, AE spade money (5.62g), H-3.146, pointed foot spade, *zi shi ban* (Zishi half [jin]) in archaic script, a lovely example! EF, S
ex *Dan Bloxson Collection* \$100 - 150



580. **WARRING STATES: State of Liang/Han**, ca. 350-250 BC, AE spade money (8.81g), H-3.174, flat handle square cornered spade type, *chui* in archaic script, partial green patina with minimal deposits, small break at top right, VF
ex *Jiùjīnshān Collection* \$100 - 150

China



581. **WARRING STATES: State of Zhao**, ca. 350-250 BC, AE spade money (5.89g), H-3.182, flat handle square foot spade type, *an yang* in archaic script, VF, ex *Jiujinshan Collection* \$80 - 121



585. **WARRING STATES: State of Yan**, ca. 350-250 BC, AE spade money (17.53g), H-3.184, flat handle square foot spade type, *an yang* in archaic script, large size flan, unusually heavy issue for type! VF, ex *Jiujinshan Collection* \$125 - 175



582. **WARRING STATES: State of Zhao**, ca. 350-250 BC, AE spade money (8.82g), H-3.182, flat handle square foot spade type, *an yang* in archaic script, heavy example! F-VF ex *Dan Bloxsom Collection* \$70 - 100



586. **WARRING STATES: State of Zhao**, 350-250 BC, AE spade money (12.01g), H-3.184, flat handle square foot spade money, large flan type, *an yang* in archaic script, lovely quality example, F-VF \$100 - 150



583. **WARRING STATES: State of Zhao**, ca. 350-250 BC, AE spade money (5.39g), H-3.182, flat handle square foot spade type, *an yang* in archaic script, F-VF, ex *Dan Bloxsom Collection* \$70 - 100



587. **WARRING STATES: State of Yan**, ca. 350-250 BC, AE spade money (5.07g), H-3.186a, flat handle square foot spade type, *an yang* in archaic script, rounded *an*, rounded *yang*, *you* at right on reverse, small casting hole in flashing, EF ex *Jiujinshan Collection* \$135 - 165



584. **WARRING STATES: State of Zhao**, 350-250 BC, AE spade (5.76g), H-3.183, *an yang*, assigned to West An Yang in Inner Mongolia, lovely VF \$80 - 100



588. **WARRING STATES: State of Yan**, ca. 350-250 BC, AE spade money (9.68g), H-3.186e, flat handle square foot spade type, *an yang* in archaic script, rounded *an*, rounded *yang*, *zuo* at left on reverse, EF, ex *Jiujinshan Collection* \$135 - 165



592. **WARRING STATES: State of Zhao**, ca. 350-250 BC, AE spade money (5.23g), H-3.194, flat handle square foot spade type, *shi* in archaic script, Fine, ex *Jiujinshan Collection* \$65 - 85



589. **WARRING STATES: State of Yan**, ca. 350-250 BC, AE spade money (6.99g), H-3.186e, flat handle square foot spade type, *an yang* in archaic script, rounded characters, *zuo* on reverse at left, VF, ex *Dan Bloxson Collection* \$80 - 120



593. **WARRING STATES: State of Zhao/Han**, ca. 350-250 BC, AE spade money (12.01g), H-3.217, flat handle square foot spade type, *ge* in archaic script, *yi ban* on reverse, large size flan, superb quality! EF, ex *Jiujinshan Collection* \$225 - 275



590. **WARRING STATES: State of Yan**, ca. 350-250 BC, AE spade money (4.72g), H-3.186a, flat handle square foot spade type, *an yang* in archaic script, rounded *an*, rounded *yang*, *you* at left on reverse, F-VF, ex *Jiujinshan Collection* \$70 - 100



594. **WARRING STATES: State of Zhao/Han**, ca. 350-250 BC, AE spade money (11.66g), H-3.217, flat handle square foot spade type, *ge* in archaic script, *yi ban* on reverse, large size flan, hole at top, F-VF, ex *Jiujinshan Collection* \$70 - 100



591. **WARRING STATES: State of Zhao**, ca. 350-250 BC, AE spade money (5.73g), H-3.194, flat handle square foot spade type, *shi* in archaic script, VF, ex *Jiujinshan Collection* \$80 - 120

China



595. **WARRING STATES: State of Yan**, 350-250 BC, AE spade money (6.13g), H-3.220, flat handle square foot pointed shoulder spade money, small flan type, *gong chang* in archaic script, VG-F \$75 - 100



599. **WARRING STATES: State of Liang**, ca. 350-250 BC, AE spade money (5.22g), H-3.227, flat handle square foot spade type, *liang* in archaic script, Fine ex *Jiujinshan Collection* \$65 - 85



596. **WARRING STATES: State of Liang**, ca. 350-250 BC, AE spade money (4.21g), H-3.227, flat handle square foot spade type, *liang* in archaic script, VF ex *Jiujinshan Collection* \$80 - 120



600. **WARRING STATES: State of Liang**, ca. 350-250 BC, AE spade money (5.93g), H-3.227var, flat handle square foot spade type, *liang* in archaic script, variation in characters, Fine, S, ex *Jiujinshan Collection* \$90 - 110



597. **WARRING STATES: State of Liang**, ca. 350-250 BC, AE spade money (4.42g), H-3.227, flat handle square foot spade type, *liang* in archaic script, VF ex *Jiujinshan Collection* \$80 - 120



601. **WARRING STATES: State of Zhao**, ca. 350-250 BC, AE spade money (7.01g), H-3.330, flat handle square foot spade type, *lin* in archaic script, VF, ex *Jiujinshan Collection* \$80 - 120



598. **WARRING STATES: State of Liang**, 350-250 BC, AE spade money (4.88g), H-3.227, flat handle square foot spade money, small flan type, *liang* in archaic script, encrustation, Fine \$75 - 100



602. **WARRING STATES: State of Zhao**, ca. 350-250 BC, AE spade money (6.62g), H-3.330, flat handle square foot spade type, *lin* in archaic script, VF, ex *Jiujinshan Collection* \$80 - 120



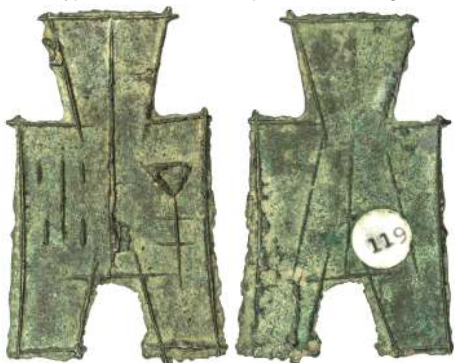
603. **WARRING STATES: State of Zhao**, 350-250 BC, AE spade money (5.89g), H-3.330, flat handle square foot spade money, small flan type, *lin* in archaic script, VF \$75 - 100



604. **WARRING STATES: State of Zhao**, ca. 350-250 BC, AE spade money (6.51g), H-3.330, flat handle square foot spade type, *lin* in archaic script, Fine, ex *Jiujinshan Collection* \$65 - 85



605. **WARRING STATES: State of Han**, 350-250 BC, AE spade money (5.89g), H-3.334, flat handle square foot spade money, small flan type, *lu* in archaic script, VF, ex *George Fisher* \$75 - 100



606. **WARRING STATES: State of Han**, ca. 350-250 BC, AE spade money (5.67g), H-3.343, flat handle square foot spade type, *nie* in archaic script, a lovely example! EF ex *Jiujinshan Collection* \$135 - 165



607. **WARRING STATES: State of Han**, ca. 350-250 BC, AE spade money (5.08g), H-3.343, flat handle square foot spade type, *nie* in archaic script, a lovely example! EF ex *Jiujinshan Collection* \$135 - 165



608. **WARRING STATES: State of Liang**, ca. 350-250 BC, AE spade money (6.27g), H-3.355, flat handle square foot spade type, *ping yang* in archaic script, long characters, Fine ex *Dan Bloxsom Collection* \$70 - 100

Possibly issued by the State of Zhao.



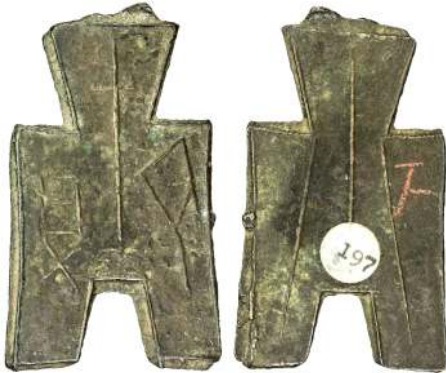
609. **WARRING STATES: Liang/Zhao**, ca. 350-250 BC, AE spade money (5.78g), H-3.358, flat handle square foot spade type, *ping yang* in archaic script, Fine, ex *Jiujinshan Collection* \$65 - 85



610. **WARRING STATES: State of Han, 350-250 BC, AE spade money (5.67g), H-3.373, flat handle square foot spade money, small flan type, uncertain characters, but likely *qi bei* in archaic script, VF** \$75 - 100



614. **WARRING STATES: State of Zhao, 350-250 BC, AE spade money (5.73g), H-3.403, flat handle square foot spade money, small flan type, *xiang yuan* in archaic script, bold, VF** \$75 - 100



611. **WARRING STATES: State of Han, ca. 350-250 BC, AE spade money (6.85g), H-3.373, flat handle square foot spade type, *qi bei* in archaic script, Fine, ex *Jiujinshan Collection*** \$90 - 110

Qi Bei is the traditional reading of this name, but Bei Qiu and Qui Bei have also been put forward as potential readings.



615. **WARRING STATES: State of Zhao, 350-250 BC, AE spade money (6.25g), H-3.403var, flat handle square foot spade money, small flan type, *xiang yuan* in archaic script, attractive example, F-VF** \$75 - 100



612. **WARRING STATES: State of Han, ca. 350-250 BC, AE spade money (4.94g), H-3.373, flat handle square foot spade type, *qi bei* in archaic script, Fine, ex *Jiujinshan Collection*** \$90 - 110



616. **WARRING STATES: State of Han, ca. 350-250 BC, AE spade money (5.91g), H-3.417, flat handle square foot spade type, *zhai yang* in archaic script, Fine, ex *Jiujinshan Collection*** \$65 - 85



613. **WARRING STATES: State of Han, ca. 350-250 BC, AE spade money (5.07g), H-3.373, flat handle square foot spade type, *qi bei* in archaic script, Fine, ex *Jiujinshan Collection*** \$90 - 110



617. **WARRING STATES: State of Zhao, ca. 350-250 BC, AE spade money (4.86g), H-3.423, flat handle square foot spade type, *zhi* in archaic script, small natural casting hole, F-VF ex *Jiujinshan Collection*** \$60 - 90



618. **WARRING STATES: State of Zhao**, ca. 350-250 BC, AE spade money (5.37g), H-3.439, flat handle square foot spade type, *shi* in archaic script, F-VF, ex *Jiujinshan Collection* \$80 - 120



619. **WARRING STATES: State of Zhao**, 350-250 BC, AE spade money (5.84g), H-3.439, flat handle square foot spade money, small flan type, uncertain character, but likely *shi* in archaic script, with old Chinese collector's number written in red ink, Fine \$75 - 100



620. **WARRING STATES: Anonymous**, ca. 350-250 BC, AE spade money (5.27g), H-3.453, flat handle square foot spade type, *lan* or *zheng* in archaic script, F-VF, ex *Jiujinshan Collection* \$70 - 100



621. **WARRING STATES: State of Yan**, 350-250 BC, AE spade money (5.38g), H-3.453, flat handle square foot spade money, small flan type, *lan* or *zheng* in archaic script, some encrustation, Fine \$75 - 100



622. **WARRING STATES: State of Chu**, ca. 350-250 BC, AE spade money (36.31g), H-3.470, large flat handle square foot spade type, *pei bi dang jin* on obverse, *shi huo* on reverse in archaic script, Very Good, ex *Jiujinshan Collection* \$450 - 550

The State of Chu was an ancient Chinese state in the Yangtze valley during the Zhou Dynasty. Originally Chu was considered a viscounty, but starting from King Wu in the early 8th century BC, the rulers of Chu declared themselves kings on an equal footing with the Zhou rulers. Originally known as Jing and then as Jingchu, Chu occupied vast areas of land at its height, including most of the present-day provinces of Hubei and Hunan, along with parts of Chongqing, Guizhou, Henan, Anhui, Jiangxi, Jiangsu, Zhejiang, and Shanghai. The hao in the reverse inscription shi hao probably refers to ten ant nose type coins. These spades are thick and robust with well developed rims all the way around, with a large round hole in the top.



623. **WARRING STATES: State of Chu**, ca. 350-250 BC, AE spade money (33.21g), H-3.470, large flat handle square foot spade type, *pei bi dang jin* on obverse, *shi huo* on reverse in archaic script, Fine, ex *Jiujinshan Collection* \$700 - 1,000



624. **WARRING STATES: State of Chu**, ca. 350-250 BC, AE spade money (35.71g), H-3.470, large flat handle square foot spade type, *pei bi dang jin* on obverse, *shi huo* on reverse in archaic script, Fine, ex *Jiujinshan Collection* \$700 - 1,000



625. **WARRING STATES: Anonymous**, ca. 350-250 BC, AE spade money (11.27g), H-3.482, flat handle round footed spade type, archaic *lin* obverse, *yi* on reverse, natural casting hole at top, VF, ex *Jiujinshan Collection* \$450 - 550

Possibly issued by either the State of Qin, Zhao or Zhong Shan.



626. **WARRING STATES: State of Qi**, 400-220 BC, AE knife money (53.37g), H-4.6, three-character knife, *qi fa huo* ("the authorized currency of Qi") in archaic script on obverse, reverse with three lines, thick characters in high relief, F-VF ex *Weiduoliya Collection* \$1,000 - 1,200

Photo size reduced.



627. **WARRING STATES: State of Qi, 400-220 BC, AE knife money** (44.17g), H-4.6e, three-character knife, *qi fa huo* ("the authorized currency of Qi") in archaic script on obverse, reverse with three lines, *qi* or *bi* on reverse, thin characters, tip broken off, VF, ex *Dan Bloxsom Collection* \$600 - 700

Photo size reduced.



629. **WARRING STATES: State of Qi, 400-220 BC, AE knife money** (49.09g), H-4.6i, three-character knife, *qi fa huo* ("the authorized currency of Qi") in archaic script on obverse, reverse with three lines, *bu* on reverse, thin characters, light encrustation, a lovely example! VF-EF, ex *Dan Bloxsom Collection* \$1,200 - 1,500

Photo size reduced.



628. **WARRING STATES: State of Qi, 400-220 BC, AE knife money** (46.93g), H-4.6e, three-character knife, *qi fa huo* ("the authorized currency of Qi") in archaic script on obverse, reverse with three lines, *qi* or *bi* on reverse, thin characters, encrusted, tip broken off, F-VF, ex *Dan Bloxsom Collection* \$500 - 600

Photo size reduced.



630. **WARRING STATES: State of Qi, 400-220 BC, AE knife money** (45.95g), H-4.6j, three-character knife, *qi fa huo* ("the authorized currency of Qi") in archaic script on obverse, reverse with three lines, *gong* on reverse, thin characters, encrusted, Fine ex *Dan Bloxsom Collection* \$600 - 800

Photo size reduced.

China



631. **WARRING STATES: State of Liang**, 350-220 BC, AE cash (9.42g), H-6.3, S-73, *yuan* at right in archaic characters, VF \$150 - 200



632. **WARRING STATES: State of Liang**, 350-220 BC, AE cash (8.23g), H-6.3, *yuan* at right in archaic characters, crude F-VF ex Jess Yocker Collection \$135 - 165



633. **WARRING STATES: State of Liang**, 350-220 BC, AE cash (9.62g), H-6.3, archaic *yuan* at right, with some encrustation, Fine \$100 - 125



634. **WARRING STATES: State of Qi**, 300-220 BC, AE cash (5.08g), H-6.24, *yi si hua* ("[City of] Yi, four hua") in archaic characters, large flan defect, acid cleaned, F-VF, R ex Dan Bloxson Collection \$75 - 100



635. **WARRING STATES: State of Qi**, 300-220 BC, AE cash (8.92g), H-6.25, *yi liu hua* ("[City of] Yi, [value] six hua") in archaic script, acid cleaned, VF, ex Dan Bloxson Collection \$90 - 110
636. **WARRING STATES: LOT of 'fish money'** (6), bronze cast in shape of fish left, some with scales; **'dragon bridge money'** (3), bronze cast in shape of two curved dragon heads connecting at center; **'bridge money'** (10), bronze cast in shape of traditional ancient Chinese arch bridge, some with designs, a nice collection of all different types and sizes, much better than the usual mixture of types, retail value \$900, **lot of 19 pieces** \$500 - 700

These types are mentioned in Coole, Jen, and other references with ambiguous statements regarding their possible use as money.

637. **WARRING STATES: LOT of Chinese bronze knife money** 400-220 BC, nice group of 6 different reverse characters, all in VF quality, plus two straight knives, H-4.60z and H-4.67, both in Fine quality, with vibrant green patination, retail value \$500, **lot of 8 knives** \$300 - 400
638. **WARRING STATES/HAN DYNASTY: LOT of 4 Warring States Period and/or Western Han Dynasty weapons/parts including;** 325mm x 61mm bronze short sword, 92mm x 36mm bronze *ge bi* - halberd money, 90mm bronze spear tip with hollow interior, 52mm possible cross bow part, a nice group of early Chinese antiquities, retail value \$500, **lot of 4 items** \$250 - 350
639. **WARRING STATES/HAN DYNASTY: LOT of 8 bronze belt hooks**, 50mm plain type, 66mm plain type, 75mm plain type, 69mm plain type, 87mm scalloped design, 97mm plain very thin type, 106mm scalloped design, 169mm large size plain type, a nice group of early Chinese antiquities, retail value \$1000, **lot of 8 items** \$500 - 700

From an early date Chinese men used girdles to hold up their trousers. In the Eastern Zhou period (770-221 BC), belt ornaments came into common use, a practice that was stimulated by contact with nomadic tribes. As horse riding became a way of life, belts were needed to hold up the trousers or fasten the jacket. The long robe known as a shenyi, which became popular at this time, was secured by a belt, and so also required a hook. Belt hooks quickly became items for elaborate ornamentation, in many materials. At the time, personal decoration became very important as a marker of status and wealth.



640. **QIN: Anonymous**, 300-200 BC, AE cash (9.58g), H-7.6, 35mm, *ban liang* in archaic script, lovely style, VF ex Dan Bloxson Collection \$90 - 110



641. **QIN: Anonymous**, 300-200 BC, AE cash (10.09g), H-7.6, 39mm, *ban liang* in archaic script, with casting sprue, VF ex *Dan Bloxsom Collection* \$90 - 110



642. **QIN: Anonymous**, 300-200 BC, AE cash (10.02g), H-7.6, 36mm, *ban liang* in archaic script, VF ex *Dan Bloxsom Collection* \$90 - 110



643. **XIN: Wang Mang**, 7-23 AD, AE spade money (12.81g), H-9.29, *da bu heng qian* ("value 1000"), cast from 10-14 AD, EF ex *Jiujinshan Collection* \$135 - 165



644. **XIN: Wang Mang**, 7-23 AD, AE spade money (10.19g), H-9.29, *da bu heng qian* ("value 1000"), cast from 10-14 AD, some light encrustation, traces of original luster, a lovely example! EF ex *Wéiduoliya Collection* \$75 - 100



645. **XIN: Wang Mang**, 7-23 AD, AE spade money (11.85g), H-9.29, *da bu heng qian* (value 1000), cast from 10-14 AD, lovely VF-EF, ex *Jiujinshan Collection* \$135 - 165



646. **XIN: Wang Mang**, 7-23 AD, AE spade money (12.87g), H-9.29, *da bu heng qian* ("value 1000"), cast from 10-14 AD, with casting sprues on both feet, VF-EF, ex *Jiujinshan Collection* \$100 - 150



647. **XIN: Wang Mang**, 7-23 AD, AE spade money (12.86g), H-9.29, *da bu heng qian* ("value 1000"), cast from 10-14 AD, VF ex *Jiujinshan Collection* \$90 - 110



648. **XIN: Wang Mang**, 7-23 AD, AE spade money (10.05g), H-9.29, *da bu heng qian* ("value 1000"), cast from 10-14 AD, VF ex Jiujinshan Collection \$90 - 110



649. **HAN:**83mm, bronze hand mirror, Han Dynasty (206BC-220AD), vanity legend around crescent decorated center with small knob, some verdigris, VF ex Arthur W. Hummel, Jr. and Sr. Collection \$175 - 225

Photo size reduced.



650. **HAN:**74mm, bronze hand mirror, Han Dynasty (206 BC-220AD), outer crescent border, inner circle with raised knobs on circle, central knob, earthen hues, VF ex Arthur W. Hummel, Jr. and Sr. Collection \$100 - 150

Photo size reduced.



651. **QIUZI STATE: Anonymous**, 5th-6th century, AE cash (1.21g), H-10.48, *wu zhu*, reverse legend in yet undeciphered Qiuzi script, VF \$100 - 150



652. **QIUZI STATE: Anonymous**, 5th-6th century, AE cash (1.97g), H-10.48, XN-65, *wu zhu*, reverse in yet undeciphered Qiuzi script, VF, ex Wéiduoliya Collection \$100 - 150

Qiuzi is the old Chinese transcription for the Tokharian name of the old kingdom of Kucha, a very important state on the middle route of Silk Road from the Han to the Tang dynasty period. Qiuzi, one of the numerous states of the ancient Western Region, covered roughly the present day Kucha County of Xinjiang. The place was under the jurisdiction of the Xiyu Duhufu of the Han Dynasty.



653. **SHU: Anonymous**, 221-265, AE cash (6.35g), H-11.11, *zhi bai wu zhu* in archaic script, *wei* at left on reverse, VF \$75 - 100



654. **CHENG HAN: Han Xing**, 303-347, AE cash (1.21g), H-12.6, inscription read from right to left, encrusted, Fine \$100 - 150

Li Shou of Sichuan adopted the period title of Han Xing. This is the first recorded use of a reign title on a coin. This reign title ended in AD 343.



655. **LATER ZHAO: Han Xing**, 303-347, AE cash (1.10g), H-12.7, inscription read from top to bottom, encrusted, Fine \$75 - 100



656. **NORTHERN ZHOU: Anonymous**, 557-581, AE cash (5.07g), H-13.32, seal script, *yong tong wan guo* ("everlasting circulation in ten thousand kingdoms"), EF, S \$200 - 300



657. **NORTHERN ZHOU: Anonymous**, 557-581, AE cash (4.92g), H-13.32, seal script, *yong tong wan guo* ("everlasting circulation in ten thousand kingdoms"), EF, ex Jiujinshan Collection \$200 - 300



658. **NORTHERN ZHOU: Anonymous**, 557-581, AE cash (5.16g), H-13.32, seal script, *yong tong wan guo* ("everlasting circulation in ten thousand kingdoms"), VF, ex *Wéiduoiliya Collection* \$75 - 100
Issued in 579 AD by Emperor Xuan. Its nominal weight was 12 zhu, and the coin was meant to be equivalent to ten wu xing coins.



659. **TANG: De Zong**, 780-783, AE cash (4.55g), H-14.133, *jian zhong tong bao*, F-VF, R \$75 - 100
Judging by their find spots, these coin were likely cast by the local government in the Kuche area of Xinjiang around 760-780.



660. **TANG: De Yi**, rebel, 758-759, AE large cash (19.02g), H-14.141, first issue of Shi Siming, crescent above on reverse, bold VF, ex *Wéiduoiliya Collection* \$200 - 250



661. **TANG: Shun Tian**, rebel, 758-761, AE cash (21.02g), H-14.147, crescent on reverse, F-VF, R \$125 - 175



662. **TANG: Shun Tian**, rebel, 758-761, AE 100 cash, H-14.147, crescent above on reverse, tooling on reverse, Fine ex *Jiùjīnshān Collection* \$100 - 150



663. **TANG: Shun Tian**, rebel, 759-761, AE large cash (16.98g), H-14.148, second issue of Shi Siming, crescent and dot above on reverse, F-VF, ex *Wéiduoiliya Collection* \$120 - 160

Shi Siming was a general during the Tang Dynasty who followed his childhood friend An Lushan in rebelling against the Tang, and who later succeeded An Lushan's son An Qingxu as emperor of the Yan state that An Lushan had established. This large coin was valued at 100 kai yuan cash during the rebellion.



664. **MIN: Kai Yuan**, 909-945, large lead cash (36.18g), H-15.1, *min* (for Fujian area) above, crescent below, Fine \$100 - 150

Min was one of the 'Ten Kingdoms' and it existed in a mountainous region of modern day Fujian province of China and had a history of quasi-independent rule with its capital at Fuzhou. The Kingdom of Min was conquered by the Southern Tang Kingdom in 945 AD.

665. **FIVE DYNASTIES: LOT of Tang**; 5 *kai yuan*, 6 *qian yuan* (including some large size examples), **Later Zhou**; 2 *zhou yuan*, **Former Shu**; 2 *guang tian*, 1 *qian de*, **Southern Tang**; 4 *tang guo*, **Southern Han**; 1 *qian hend* lead coin, nearly all attributed and worked up in 2x2 holders, average circulated condition, retail value \$225, **lot of 21 coins** \$100 - 150



666. **LATER JIN: Tian Fu**, 936-947, AE cash (2.49g), H-15.3, left shoulder *yuan*, chipped flan, Good to Very Good, R, ex *Jiùjīnshān Collection* \$75 - 100



667. **LIAO: Ying Li**, 951-969, AE cash (3.78g), H-18.04, Zeno-7535 (this piece), VF, RRRR, ex *Shèngbídébao Collection* \$700 - 1,000

Listed by Hartill as rarity "0", which is the highest level of rarity in his catalog, marked, along with the first four Liao rulers, "Only a few specimens each of the above coins are known".



668. **LIAO: Tong He**, 983-1011, AE cash (4.93g), H-18.07, Zeno-7534 (this piece), left shoulder *yuan* variety, Very Good, RR, ex Shèngbidébao Collection \$100 - 200

A nicer specimen sold in Stephen Album Auction 21, Lot 807, for \$650.



669. **LIAO: Jing Fu**, 1031-1032, AE cash (4.43g), H—, Zeno-5928 (this piece), extremely rare and recently discovered for the first time, VF, RRRR, ex Shèngbidébao Collection \$700 - 1,000

Published in 2012 in Liu Feiyan's Illustrated Price-Guide of Ancient Chinese Coins, page 232, from a group found in Inner Mongolia. The Liu Feiyan description has now been posted as Zeno-5928.



670. **LIAO: Qing Ning**, 1055-1064, AE cash (3.18g), H-18.13, Zeno-41032 (this piece), alternative calligraphy for the ruler's name, F-VF, ex Shèngbidébao Collection \$75 - 100



671. **LIAO: Da Kang**, 1075-1084, AE cash (3.76g), H-18.16, decent Fine \$75 - 100

A Rare and Important Liao Dynasty Piece



672. **LIAO: Da Kang**, 1075-1084, AR 5 cash (29.71g), 35.5mm, cast in silver color, VF, RRRR ex Shèngbidébao Collection \$35,000 - 40,000

An extremely rare silver color multiple cash of the Liao Dynasty, of which only about six pieces are known. See the reference paper, "Dakang tongbao da yin qian ("large silver cash coin of dakang tongbao")" in the book by Guan Hanting, "Zhonghua Zhen Quan Zhui Zong Lu," Shanghai, 2001.



673. **LIAO: Ta Kang**, 1075-1084, AE cash (3.65g), H-18.16, with old collector's number in ink on reverse, lovely specimen for type! F-VF, S \$75 - 100



674. **LIAO: Da Kang**, 1075-1084, AE amuletic multiple cash (11.02g), Zeno-16076 (this piece), *da kang yuan bao* , some very old light tooling in the fields, lovely toning, choice VF, R ex Shèngbidébao Collection \$2,500 - 3,500



675. **LIAO: Da Kang**, 1075-1084, AE amuletic multiple cash (15.64g), Zeno-16078 (this piece), *da kang yuan bao* , bold calligraphy, pierced twice (for attachment), choice VF, R ex Shèngbidébao Collection \$100 - 150



676. **LIAO: Da Kang**, 1075-1084, AE amuletic multiple cash (28.21g), year 1, Zeno-1586 (this piece), *da kang yuan nian* ("Da Kang first year [1075]"), lovely calligraphy and style, bold VF, RR, ex Shèngbidébao Collection \$4,000 - 5,000



677. **LIAO: Da Kang**, 1075-1084, AE amuletic multiple cash (46.79g), year 6, Zeno-1511 (this piece), 49mm, *da kang liu nian* ("Da Kang year six [1080]"), lovely calligraphy, largest example of this series, VF, RRR, ex Shèngbídébào Collection \$4,000 - 5,000

Please see the long and interesting discussion of this piece on Zeno. Photo size reduced.



678. **LIAO: Da An**, 1085-1094, AE cash (3.22g), H-18.17, short an variety, F-VF, ex Shèngbídébào Collection \$75 - 100



679. **LIAO: Da An**, 1085-1094, AE cash (3.07g), H-18.18, Zeno-14346 (this piece), long an variety, this is the rarer of the two varieties, VF, R, ex Shèngbídébào Collection \$100 - 150



680. **LIAO: Qian Tong**, 1101-1110, AE cash (2.54g), H-18.21, VF, ex Shèngbídébào Collection \$75 - 100



681. **LIAO: Tian Qing**, 1111-1120, AE amuletic multiple cash (20.74g), Zeno-16075 (this piece), *tian qing yuan bao*, bold VF, R, ex Shèngbídébào Collection \$75 - 100

Later made issue, likely either Ming or Qing period, with plain square rather than convex square around the central hole.



682. **LIAO: AE temple coin** (2.83g), *huang di wan sui* ("May the Emperor live ten thousand years"), choice VF, ex Shèngbídébào Collection \$100 - 150



683. **LIAO: AE temple coin** (2.22g), *qian qiu wan sui* ("A thousand autumns and ten thousand years"), formal design on reverse, VF, ex Shèngbídébào Collection \$100 - 150



684. **LIAO: AE temple coin** (1.76g), *qian qiu wan sui* ("A thousand autumns and ten thousand years"), two thick crescents on reverse, VF, ex Shèngbídébào Collection \$100 - 150



685. **LIAO: AE temple coin** (1.10g), *qian qiu wan sui* ("A thousand autumns and ten thousand years"), blank reverse, Fine, ex Shèngbídébào Collection \$75 - 100



686. **LIAO: AE temple coin** (2.17g), *wu nan er nu* ("Five sons two daughters"), inscription on both sides, Fine, ex Shèngbídébào Collection \$75 - 100



687. **LIAO: AE temple coin** (0.95g), Zeno-14899 (this piece), *xiao quan zhi yi* ("small coin, exactly one"), probably unpublished, Very Good, R, ex Shèngbídébào Collection \$75 - 100

The meaning of the text on this charm is uncertain. It is similar to coins produced by Wang Mang during the Xin dynasty.



688. **LIAO: AE charm** (10.54g), Zeno-5779 (this piece), *chang ming da ji* ("Longevity and great good luck") / two dragons, said to have been found in Inner Mongolia, VF, ex Shèngbídébào Collection \$100 - 150



689. **LIAO:** AE charm (7.91g), *qian qiu wan sui* ("A thousand autumns and ten thousand years"), uncertain reverse design, VF, ex *Shèngbidébao* Collection \$100 - 150



690. **LIAO:** AE charm (5.85g), *qian qiu wan sui* ("A thousand autumns and ten thousand years"), blank reverse, two fish attached, F-VF, R, ex *Shèngbidébao* Collection \$100 - 150



691. **WESTERN LIAO: Xu Xing**, 1151-1164, AE 2 cash (8.18g), H—, 28mm, barbarous local calligraphy, lovely patination, unique, VF, RRRR, ex *Shèngbidébao* Collection \$9,000 - 11,000

Possibly cast in Balasagun, which was an ancient Soghdian city in modern-day Kyrgyzstan, located in the Chuy Valley between Bishkek and Issyk-Kul Lake. Balasaghun was the capital of the Qara Khitay state in the 12-13th Centuries. This coin was unearthed at the Aq-Beshim site in Kyrgyzstan. To the South-East from the Ak-Beshim site is an ancient residential area inhabited in the past by Kidans (Qidan). Tang dynasty kai-yuan cash and Northern Song cash are usual finds there. This coin was found in this area.

The Western Liao (1124-1218) dynasty, also known as Qara Khitay state, was founded by Yelü Dashi, a member of the Liao royal family, who led the remnants of the Liao Dynasty to Central Asia after fleeing from the Jurchen conquest of their homeland in the North and Northeast of modern day China. The empire was usurped by the Naimans under Küchük in 1211. The empire was finally destroyed by the Mongol Empire in 1218.

Please read the articles (in Russian, Chinese & English) about this interesting dynasty at:
<http://www.zeno.ru/showgallery.php?cat=9299>.



692. **WESTERN LIAO: Xu Xing**, 1151-1164, AE cash (7.67g), H—, 24mm, thick flan, most likely a mother *mu qián* or sample *yang qián* coin, dot below on reverse, unique, VF, RRRR ex *Shèngbidébao* Collection \$6,000 - 8,000

Possibly cast in Balasagun, which was an ancient Soghdian city in modern-day Kyrgyzstan. This coin was unearthed at the Krasnaya Rechka site (Navekat), Kyrgyzstan.



693. **STATE OF QI: Fu Chang**, 1130-1137, AE 5 cash (10.97g), H-18.79, with *zhong bao* legend, seal script, EF, RRR ex *Shèngbidébao* Collection \$1,000 - 2,000

The Jin created the Da Qi ("Great Qi") state in their second attempt to form a puppet state in northern China, then nominally ruled by Liu Yu of Han Chinese descent, but was obligated to obey the orders of the Jurchen generals. In late 1137, the Jin reduced Liu Yu's title to that of a prince and abolished the State of Qi after a failed invasion of the Song territories. The Jin and Song then renewed the negotiations towards peace.



694. **STATE OF QI: Fu Chang**, 1130-1137, AE 3 cash (10.19g), H-18.79, with *zhong bao* legend, seal script, a beautiful example, EF, RRRR, ex *Shèngbidébao* Collection \$600 - 800

An inferior specimen sold in Stephen Album Auction 21 Lot 825 for \$1500.



695. **STATE OF QI: Fu Chang**, 1130-1137, AE 3 cash (7.67g), H-18.80, with *zhong bao* legend, orthodox script, pleasing example, VF, RRRR, ex *Shèngbidébao* Collection \$600 - 800

A similar specimen sold in Stephen Album Auction 21 Lot 826 for \$2600.



696. **WESTERN XIA: Yuan De**, 1119-1126, AE cash (3.03g), H-18.91, Zeno-64 (this piece), Li script, lovely example, VF-EF, RRR, ex *Shèngbidébao* Collection \$300 - 400



697. **WESTERN XIA: Da An**, 1074-1084, AE cash (3.87g), H-18.91, *t-ha-h ray lee ndzen* in Tangut script (*da an bao qian* in Chinese), attractive VF, **RRR**
ex Shèngbidébao Collection \$800 - 1,000

The Tangut script (xi xià wén) was a logographic writing system, used for writing the extinct Tangut language of the Western Xia Dynasty. Tangut characters are similar in appearance to Chinese characters, with the same type of strokes, but the methods of forming characters in the Tangut writing system are significantly different from those of forming Chinese characters. There are only five coin types in Tangut script and all are very rare.

A similar specimen sold at Stephen Album Auction 21, Lot 813, for \$2200.



698. **WESTERN XIA: Tian Sheng**, 1149-1169, AE cash (3.37g), H-18.99s, Zeno-916 (this piece), *tie mu* ("iron mother"), a copper mother coin for iron coin type, choice VF, **R**
ex Shèngbidébao Collection \$200 - 300



699. **WESTERN XIA: Qian You**, 1170-1193, AE cash (2.87g), H-18.101, *ts-hee-oo-h 'oo 'lee 'ndzen* in Tangut script (for Chinese *qian you bao qian*), VF, **RR**
ex Shèngbidébao Collection \$400 - 500

700. **WESTERN XIA: LOT of 4 pieces:** Tian Sheng, 1149-1169, H-18.97, copper (VF) and H-18-99, iron (bold VF); and Qian You, 1170-1193, H-18.104, iron (2 pcs, both VF), retail \$150, **lot of 4 pieces**, ex Shèngbidébao Collection \$75 - 100



701. **JIN: Zheng Long**, 1158-1161, AE cash (3.84g), H-18.40, standard 4 stroke *zheng*, reverse mold shifted off-center, VF, **R**
ex Shèngbidébao Collection \$50 - 75



702. **JIN: Zheng Long**, 1158-1161, AE cash (4.51g), H-18.41, 5 stroke *zheng*, very rare variety, VF, **RR**
ex Shèngbidébao Collection \$150 - 250

A similar example sold in Stephen Album Auction 21 Lot 815 for \$430.



703. **JIN: Da Ding**, 1178-1189, AE charm (3.88g), H-18.42 imitation, Zeno-9758 (this piece), later casting of the *da ding tong bao* type, with sun, crescent, and yi ("one") on reverse, VF, **R**
ex Shèngbidébao Collection \$75 - 100

Possibly a "later cast" charm, perhaps made during the Mongol or later dynasties.



704. **JIN: Da Ding**, 1178-1189, AE cash (4.07g), H-18.52A, double-sided, same on both sides, not yet listed on Zeno, VF, **RR**, ex Shèngbidébao Collection \$200 - 300

705. **JIN: Da Ding**, 1178-1189, AE cash, LOT of 6 pieces: H-18.42 (bold VF), H-18.42var (Fine), H-18.43 (VF), H-18.47 (2 pcs., VF and F, the second with flan crack, but L-1012 from the J.H.S. Lockhart Collection), and H-18.48 (VF), retail \$200, **lot of 6 pieces**, ex Shèngbidébao Collection \$100 - 150



706. **JIN: Da Ding**, 1178-1189, AE temple coin (1.77g), Zeno-80367 (this piece), inscribed *da ding tong bao*, as on his regular coins, Fine, **RRRR**, ex Shèngbidébao Collection \$100 - 150

The importance of this piece, the first reported temple coin that can securely be assigned to the Jin Dynasty, is discussed on the Zeno page for this piece.



707. **JIN: Tai He**, 1204-1209, AE 2 cash (6.08g), H-18.59, VF, **RR**
ex Shèngbidébao Collection \$400 - 500

A similar specimen sold at Stephen Album Auction 21 Lot 816 for \$1100.



708. **JIN: Tai He**, 1204-1209, AE 10 cash (17.17g), H-18.63, seal script, light tooling in reverse fields, VF
ex Jiujinshan Collection \$500 - 700

China



709. **JIN: Tai He**, 1204-1209, AE 10 cash (17.53g), H-18.63, Zeno-742 (this piece), seal script, attractive VF ex Shèngbídébao Collection \$250 - 350

Two similar specimens sold in Stephen Album Auction 21, Lot 821 in slightly lower grade for \$800 and Lot 820 in better grade for \$1700.



710. **JIN: Tai He**, 1204-1209, AE charm (18.14g), H-18.63 imitation, Zeno-1656 (this piece), seal script, with reverse script (upside-down) *wang quan fa*. ("the king's support of law"), pierced four times for mounting, later casting, VF ex Shèngbídébao Collection \$150 - 250



711. **JIN: Tai He**, 1204-1209, AE charm (4.40g), H—, later fantasy piece, probably late Ming or early Qing period, with *tai he tong bao* in seal script, based on the orthodox script type H-18.58 one cash size, VF, ex Shèngbídébao Collection \$75 - 100



712. **JIN: Tai He**, 1204-1209, AE large 10 cash (38.90g), H-18.66var, Zeno-20905 (this piece), 53mm, seal script, coarse VF, ex Shèngbídébao Collection \$75 - 100

This and the following lot are cast on larger and thicker flans than that of the usual finely cast smaller specimens. Crudely engraved calligraphy, likely a contemporary and somewhat barbarous imitation of what must have been a popular type at the time.

This type is unpublished by Hartill.

Photo size reduced.



713. **JIN: Tai He**, 1204-1209, AE 10 cash (41.01g), H-18.66, corrosion and many small flan cracks at bottom, with one piece about to break away, F-VF, RRR, ex Jiùjìnshān Collection \$175 - 225

This type has been published by Hartill. Photo size reduced.



714. **JIN: Xing Ding**, 1217-1222, AR 5 cash (16.04g), H—, 34.4mm, cast in silver, VF-EF ex Shèngbídébao Collection \$2,000 - 3,000

A coin with such a legend is not listed in any modern catalog of Chinese coins, but such a coin is mentioned in Ding Fubao's encyclopaedia of cash, but not illustrated, from which it follows that a silver coin with the legend was released the end of the fourth year of the period of Xing Ding (1217-1222) during the reign of Emperor Hsuan-tsung (1213-1224) of the Jin dynasty. This date is equal to 1220 of the Western calendar. The text of the 'History of the Jin Dynasty' said that the order to cast silver coin was issued by the Governor General in the city of Zhennan.

With a weight of 16.04g and diameter of 34.4mm, this example corresponds to the 5 cash bronze coins of similar time periods of the Jin Dynasty and the Southern Song. The general style of the coin recalls the style of the Southern Song Dynasty coins - compare this instance, for example, with a Shao Xing coin produced in the period 1131-1162. The casting is done very efficiently and the coin leaves a very favorable impression.



715. **NORTHERN SONG: Da Guan**, 1107-1110, AE 10 cash (18.09g), H-16.426, slender golden script, minor reverse encrustation, EF \$75 - 100

716. **NORTHERN SONG: LOT** of all different types and varieties; 76 single cash coins, 19 two cash coins, 3 five cash coins, 15 large iron coins, a nice starter collection of Northern Song coins, nearly all attributed and worked up in 2x2 holders, average circulated condition, retail value \$350, lot of 113 coins \$175 - 250



717. **SOUTHERN SONG: Jai Tai**, 1201-1204, AE 3 cash (11.18g), H-17.506, attractive patination, VF \$75 - 100



718. **SOUTHERN SONG: Jai Tai**, 1201-1204, AE 3 cash (9.91g), H-17.506, F-VF, ex *Jiujinshan Collection* \$75 - 100



719. **SOUTHERN SONG: Jia Ding**, 1208-1224, AE 10 cash (43.08g), H-17.634, 54mm, *zhe shi* ("worth ten") on reverse, choice VF, ex *Jiujinshan Collection* \$400 - 500

This coin is not mentioned in the Song histories, but it is mentioned in the Ming encyclopedia. A similar example sold in our Auction 21, Lot 843 for \$1,800. Photo size reduced.



720. **SOUTHERN SONG: Duan Ping**, 1234-1236, AE 5 cash (15.09g), H-17.741, attractive patination, VF \$75 - 100



721. **SOUTHERN SONG: Duan Ping**, 1234-1236, AE 5 cash, H-17.741, long bao type, VF, ex *Jiujinshan Collection* \$75 - 100



722. **SOUTHERN SONG: Jia Zi**, 1237-1240, AE 5 cash (12.08g), H-17.777, attractive patination, lovely example, EF ex *Wéiduoliya Collection* \$100 - 150



723. **SOUTHERN SONG: Chun You**, 1241-1252, AE 100 cash (43.77g), H-17.806, 53mm, large size flange, *dang bai* on reverse, rim knocks, F-VF, ex *Jiujinshan Collection* \$200 - 300

Photo size reduced.



724. **SOUTHERN SONG: Chun You**, 1241-1252, AE 100 cash (24.94g), H-17.806, 51mm, large size flange, *dang bai* ("value one hundred") on reverse, tooling on reverse, VG-F ex *Wéiduoliya Collection* \$125 - 175

Photo size reduced.



725. **SOUTHERN SONG: Chun You**, 1241-1252, AE 100 cash (15.26g), H-17.807, *dang bai* on reverse, small size flange, large characters, Fine, ex *Jiujinshan Collection* \$125 - 175



726. **SOUTHERN SONG: Chun You**, 1241-1252, AE 100 cash (14.24g), H-17.809, *dang bai* on reverse, small size flan, small characters, VF, ex *Wéiduoliya Collection* \$200 - 250

A similar piece sold in Stephen Album Auction 21 Lot 857 for \$325.



727. **SOUTHERN SONG: Zhao Na**, 1131-1162, AE token (6.04g), H—, 27mm, *zhao na xin bao / shi shang*, very rare Song dynasty period wartime authorization issue, Fine, RRR ex *Shèngbidébao Collection* \$300 - 400

W. Op den Velde in his 'Cash coin index' writes: "These tokens, they can hardly be called coins, were issued by Liu Kuang Shi, the governor of Hubei, as a mark of his allegiance to the Song Dynasty in the face of the Jin Tartar attacks. Perhaps the date of issue was 1129, when during a rebellion the emperor was deposed for some weeks. Sometimes this piece is said to be a coin issued by the leader of the rebel state of Qi, Zao Wang, during this reign. The legends seem somehow more appropriate from a governor than from a rebel. However, the artfulness of some of the regal legends during this dynasty is open to debate. The reverse bears the character Shi, which seems to allude to Liu Kuang Shi himself (Cresswell 1971). Ting Fu Pao (1938) says these coins were issued between 1131-1162 in gold, silver and copper, but that he has not seen the gold and silver issues."

David Jen writes another theory on these issues in his book, Chinese Cash Identification & Price Guide, page 85: "He calls them "pass coins." This type was intended for use by soldiers of the Jin army who wanted to desert and join the Song ranks. In 1231 Jin troops again advanced against the Southern Song Dynasty. The two armies were stationed facing each other across the river. The Song commander Liu Guang Shi got word that many of the Jin soldiers were of Han nationality and were longing for home. Those who wanted to come over and join Liu Guang Shi ranks would be given these coins to serve as passes and anyone bearing them would receive a warm welcome. It was not long before tens of thousands deserted the Jin army, forcing the Jin commander to withdraw his troops and return home. The top character on the reverse means envoy and the bottom one a signature."

728. **SOUTHERN SONG:** LOT of nearly all different types and varieties; 4 single cash coins, 24 two cash coins, 1 five cash coin, 28 single iron coins, and 116 two cash iron coins, a nice starter collection of Southern Song coins with most pieces being the scarcer iron types, most attributed and worked up in 2x2 holders, average circulated condition, retail value \$1850, lot of 173 coins \$600 - 800



729. **PRE-YUAN MONGOL CHINA: Da Chao**, ca. 1206-1227, AR cash (2.50g), H-19.1, Zeno-25111 (this piece), *da chao* means "Great Dynasty," the name the Mongols used for themselves, type I-A, with countermarks U3 and H3 (according to the Zeno chart), lovely example, VF, R ex *Shèngbidébao Collection* \$1,000 - 1,500



730. **PRE-YUAN MONGOL CHINA: Da Chao**, ca. 1206-1227, AR cash (3.15g), H-19.1, Zeno-84780 (this piece), *da chao* means "Great Dynasty," the name the Mongols used for themselves, type 2-B, with countermarks T1 and U5 (according to the Zeno chart), lovely example, rare subtype, Fine, RR ex *Shèngbidébao Collection* \$1,000 - 1,200



731. **PRE-YUAN MONGOL CHINA: Da Chao**, ca. 1206-1227, AR cash (2.73g), H-19.1, c/m tamgha and Western Xia character on reverse as usual, weakly cast with casting defect, very crude Good to Very Good, RR \$700 - 1,000

Da Chao means "Great Dynasty," the name the Mongols used for themselves. According to Hartill, "This coin is alleged to have been cast by the legendary Chengis Khan at his capital at Karakorum. It is usually found in silver." This would place the date about 50-60 years prior to the formal foundation of the Yuan dynasty in 1280, when Kublai Khan was installed as Emperor of China at Beijing. An alternative attribution assigns this type to the period of Kublai Khan (1260-1294), who first claimed the title of Khaqan in 1260, finalizing his power after the defeat of his rival, Ariq Böke, in 1264. The coin would presumably have been produced either before 1280 or before the introduction of his zhi yuan tong bao cash coins in about 1285. It is currently estimated that approximately 200-250 specimens are known to exist.



732. **PRE-YUAN MONGOL CHINA: Da Chao**, ca. 1206-1227, AE multiple cash (12.63g), H-19.2, Zeno-7501 (this piece), *da chao jin he* means "great dynasty metal equivalent," believed to be a later casting, VF-EF, RR ex *Shèngbidébao Collection* \$200 - 400

As posted by Laosa on Zeno for this piece: According to Hartill, "The attribution of this coin is in doubt. The title Da Chao was used by other states on the borders of China as well as by the Mongols. This coin is mentioned in the Record of Coins of circa 1094, a century before the birth of Ghengis Khan. Peng Xinwei considers it to have been a Liao issue. Most specimen are later copies", and in the 2012 edition of Liu Feiyan's 'Huaxia Guquan Jiage Tulu' (Illustrated Price-Guide of Ancient Chinese Coins) this type is listed under Yuan Dynasty (see Zeno #116150): "Several pieces of this coin are known (one specimen is in the collection of Chen Guangyang from Singapore), all of them are believed to be the later cast". In October 2010 one specimen was sold for the price of 17325 RMB (about \$2800) on Huaxia Guquan Wang Auction.



733. **PRE-YUAN MONGOL CHINA: Da Guan**, pre-1270, AE cash (6.08g), H-19.7, *da guan jin he*, the curved style of the *da* is correct for this period, as is the casting style, but possibly a later casting, F-VF, R, ex *Shèngbidébao* Collection \$100 - 200



734. **YUAN: Zhi Yuan**, 1285-1294, AE 2 cash (6.41g), H-19.14, Zeno-7296 (this piece), *je üen tung baw* in Mongolian 'Phags-pa script, some weakness, VG, RR ex *Shèngbidébao* Collection \$400 - 500

Zhi Yuan was the title used by the famous Kublai Khan during the last decade of his reign (1260-1294).



735. **YUAN: Zhi Yuan**, 1285-1294, AE cash (3.68g), H-19.17, Zeno-7296 (this piece), Fine, RR ex *Shèngbidébao* Collection \$200 - 300

A similar piece sold in Stephen Album Auction 21 Lot 861 for \$650.



736. **YUAN: Yuan Zhen**, 1295-1296, AE cash (3.80g), H-19.25, Zeno-7618 (this piece), regular coinage, large characters, narrow character variety, praised in the comments on Zeno, VF, RRR, ex *Shèngbidébao* Collection \$700 - 900

This ruler's Mongolian name was Temur Olgeitu.



737. **YUAN: Da De**, 1297-1307, AE temple coin (0.98g), H-19.33var, *da de yuan bao*, with *yuan* be written in highly stylized form, VF-EF, RR, ex *Shèngbidébao* Collection \$150 - 250



738. **YUAN: Zhi Da**, 1310-1311, AE temple coin (1.87g), H-19.35, VF-EF, RR, ex *Shèngbidébao* Collection \$100 - 150



739. **YUAN: Zhi Da**, 1310-1311, AE 2 cash (7.06g), H-19.38, 29mm, some encrustation, VF, RRR ex *Shèngbidébao* Collection \$300 - 500

This is a very rare 2 cash for this period.



740. **YUAN: Zhi Da**, 1310-1311, AE charm (19.13g), H—, Zeno-32064 (this piece), *zhi da tong bao* written in four distinctive scripts, 'Phags-pa, Lautsa, Uighur and Tangut, in that order, double phoenix on reverse, a few light adhesions and some minimal cleaning in the field, still a very attractive example of the extremely rare charm, VF, RRRR ex *Shèngbidébao* Collection \$3,000 - 5,000

It is believed in Chinese culture that the phoenix only makes an appearance during periods of prosperity, peace and good government. The phoenix is also the symbol of the empress. This is possibly some type of official presentation or commemorative charm. This is the same example sold in China Guardian Auction House Spring 2006 Auction, Lot 3672 for RMB55 000 (\$6,875). They mention two known examples at the time of sale. There is an extensive discussion of this remarkable piece on Zeno.



741. **YUAN: Da Yuan**, 1310-1311, AE 10 cash (17.63g), H-19.46, *ta üen tong baw* in Mongol 'Phags-pa script (*da yuan tong bao* in Chinese), VF, ex *Wéiduoliya* Collection \$100 - 125

Külüg Khan (Da Yuan), born Khayishan, meaning "wall" in Mongolian, was an Emperor of the Yuan Dynasty, and is regarded as the seventh Great Khan of the Mongols in Mongolia. His name means "warrior Khan" or "fine horse Khan" in the Mongolian language.

China



742. **YUAN: Da Yuan**, 1310-1311, AE 10 cash (20.58g), H-19.46, *ta üen tong baw* in Mongol 'Phags-pa script (*da yuan tong bao* in Chinese), attractive example! VF \$75 - 100



743. **YUAN: Da Yuan**, 1308-1311, AE temple coin (1.64g), Zeno-5983 (this piece), inscribed *da yuan jia zi*, which should refer to the cyclical year equal to 1324, long after the end of the Da Yuan reign, VF, RR, ex *Shèngbidébao* Collection \$75 - 100



744. **YUAN: Zhi Zhi**, 1321-1323, AE temple coin (2.16g), H—, Zeno-7753 (this piece), *zhi zhi yuan nian*, final character *nian* (year) instead of *bao*, thus likely struck during the first year of his reign, one size smaller than Hartill-19.59, Very Good, RRR ex *Shèngbidébao* Collection \$100 - 150



745. **YUAN: Zhi Zhi**, 1321-1323, AE temple coin (3.22g), H-19.59var, *zhi zhi yuan nian*, final character *nian* ("year") instead of *bao*, thus likely struck during the first year of his reign, one size smaller than Hartill-19.59, VF, RR ex *Shèngbidébao* Collection \$100 - 150



746. **YUAN: Zhi Zhi**, 1321-1323, AE temple coin (2.46g), H-19.59, Zeno-8982 (this piece), *zhi zhi yuan bao*, with abbreviated *bao*, very rare ruler, known only for temple coins, attractive VF, RRR ex *Shèngbidébao* Collection \$200 - 300



747. **YUAN: Tai Ding**, 1324-1327, AE temple coin (2.88g), H-19.62, Zeno-4427 (this piece), *tai ding yuan bao*, with abbreviated *bao*, very rare ruler, known only for temple coins, Fine, RR ex *Shèngbidébao* Collection \$200 - 300



748. **YUAN: Zhi He**, 1328, AE temple coin (1.19g), H—, Zeno-8807 (this piece), *zhi he yuan bao*, with abbreviated *bao*, very rare ruler, known only for temple coins, as H-19.66, but smaller size., F-VF, RRR, ex *Shèngbidébao* Collection \$100 - 150



749. **YUAN: Zhi Zheng**, 1341-1368, AE temple coin (4.20g), H-19.91, Zeno-4887 (this piece), *mu qing tong bao* ("majestic brightness copper treasure") on obverse, his period title *zhi zheng* on reverse, lightly porous surfaces, F-VF, RRR ex *Shèngbidébao* Collection \$400 - 500

Toghon Temür, also known by the posthumous name Shundi bestowed by the Hongwu Emperor of the Ming Dynasty, was a son of Kus'ala who ruled as emperor of the Yuan Dynasty and is considered the last Khagan of the Mongol Empire. He bore the period titles Yuan Tong 1333-1334, Zhi Yuan 1335-1340, and Zhi Zheng 1341-1368.



750. **YUAN: Zhi Zheng**, 1341-1368, AE temple cash (1.46g), H-19.92var, ex *Shèngbidébao* Collection \$150 - 250
Published in 'Yuán dài zhi zhèng nián zhùbì' by Luo Wei, pages 100-101.



751. **YUAN: Zhi Zheng**, 1341-1368, AE cash (2.95g), CD1351, H-19.94, *maw* in Mongolian 'Phags-pa script above for Chinese cyclical date, *sin mao*, VF-EF \$150 - 200



752. **YUAN: Zhi Zheng**, 1341-1368, AE cash (2.91g), CD1351, H-19.94, *maw* in Mongolian 'Phags-pa script above for Chinese cyclical date, *sin mao*, VF-EF \$150 - 200



753. **YUAN: Zhi Zheng**, 1341-1368, AE 1 cash (3.87g), CD1352, H-19.95, Mongolian 'Phags-pa *shin* for Chinese cyclical date, VF, ex *Shèngbidébao* Collection \$75 - 100



754. **YUAN: Zhi Zheng**, 1341-1368, AE 2 cash (6.15g), CD1351, H-19.99, Mongolian 'Phags-pa *maw* for Chinese cyclical date, EF, ex *Shèngbidébao* Collection \$100 - 150



755. **YUAN: Zhi Zheng**, 1341-1368, AE 2 cash (7.64g), CD1351, H-19.99, *maw* in Mongolian 'Phags-pa script above for Chinese cyclical date, *sin mao*, VF-EF \$225 - 300



756. **YUAN: Zhi Zheng**, 1341-1368, AE 2 cash (5.81g), CD1351, H-19.99, *maw* in Mongolian 'Phags-pa script above for Chinese cyclical date, *sin mao*, VF-EF \$225 - 275



757. **YUAN: Zhi Zheng**, 1341-1368, AE 2 cash (6.52g), CD1352, H-19.100, Mongolian 'Phags-pa *shin* for Chinese cyclical date, VF-EF, ex *Shèngbidébao* Collection \$100 - 150



758. **YUAN: Zhi Zheng**, 1341-1368, AE 2 cash (7.49g), CD1352, H-19.100, Mongolian *shin* in 'Phags-pa script for cyclical date *ren chen*, VF ex *Wéiduo*liya Collection, ex *Ray Ma* Collection \$100 - 140



759. **YUAN: Zhi Zheng**, 1341-1368, AE 3 cash (11.28g), CD1351, H-19.104, Mongolian 'Phags-pa *maw* for Chinese cyclical date, VF, ex *Shèngbidébao* Collection \$120 - 160



760. **YUAN: Zhi Zheng**, 1341-1368, AE 3 cash (7.81g), CD1352, H-19.105, *shin* in Mongolian 'Phags-pa script above for Chinese cyclical date, *ren chen*, VF-EF ex *Jiùjìnshan* Collection \$100 - 150



761. **YUAN: Zhi Zheng**, 1341-1368, AE 3 cash (9.05g), CD1352, H-19.105, Mongolian 'Phags-pa *shin* for Chinese cyclical date, lovely patination, VF, ex *Shèngbidébao* Collection \$120 - 160



762. **YUAN: Zhi Zheng**, 1341-1368, AE 3 cash (7.93g), CD1352, H-19.105, *shin* in Mongolian 'Phags-pa script above for Chinese cyclical date, *ren chen*, F-VF ex *Jiùjìnshan* Collection \$75 - 100



763. **YUAN: Zhi Zheng**, 1341-1368, AE 3 cash (9.29g), CD1353, H-19.106, Mongolian 'Phags-pa *ze* for Chinese cyclical date, lovely patination, VF, ex *Shèngbidébao* Collection \$120 - 160

China



764. **YUAN: Zhi Zheng**, 1341-1368, AE 3 cash (10.17g), CD1354, H-19.107, *ze* in Mongolian 'Phags-pa script above for Chinese cyclical date, *gui si*, VF-EF, ex *Shèngbidébao* Collection \$200 - 400



765. **YUAN: Zhi Zheng**, 1341-1368, AE 3 cash (8.35g), CD1354, H-19.107, *ze* in Mongolian 'Phags-pa script above for Chinese cyclical date *gui si*, Fine \$100 - 150



766. **YUAN: Zhi Zheng**, 1341-1368, AE 2 cash (7.97g), H-19.108, Mongolian 'Phags-pa *rhi* above and Chinese *er* below on reverse for denomination, EF ex *Shèngbidébao* Collection \$100 - 200



767. **YUAN: Zhi Zheng**, 1341-1368, AE 2 cash (2.38g), H-19.108, Mongolian 'Phags-pa *rhi* above and Chinese *er* below on reverse for denomination, very light weight, possibly contemporary imitation, VF, ex *Shèngbidébao* Collection \$75 - 100



768. **YUAN: Zhi Zheng**, 1341-1368, AE 3 cash (15.48g), H-19.109, Mongolian 'Phags-pa *sam* above and Chinese *san* below on reverse for denomination, one flan crack, VF ex *Shèngbidébao* Collection \$100 - 200



769. **YUAN: Zhi Zheng**, 1341-1368, AE 5 cash (13.99g), H-19.111, Mongolian 'Phags-pa *u* for "5" on reverse, for denomination, long flan crack, possibly once glued at attempted repair, choice VF, RR, ex *Shèngbidébao* Collection \$300 - 400



770. **YUAN: Zhi Zheng**, 1341-1368, AE 5 cash (19.31g), CD1358, H-19.112, Mongolian 'Phags-pa *seu* for Chinese cyclical date, *wu xu* above reverse, date & Chinese *wu* (5) for denomination below, Fine, RRR, ex *Shèngbidébao* Collection \$200 - 300



771. **YUAN: Zhi Zheng**, 1341-1368, AE 10 cash (28.28g), H-19.115, Mongolian 'Phags-pa *shi* for denomination, bold VF ex *Shèngbidébao* Collection \$100 - 150



772. **YUAN: Zhi Zheng**, 1341-1368, AE 10 cash (30.64g), CD1358, H-19.117, Zeno-3546 (this piece), 47mm, Mongolian 'Phags-pa *seu* for Chinese cyclical date, *wu xu* above on reverse, date & Chinese *shi* (10) for denomination below, very lightly cleaned, F-VF, RR, ex *Shèngbidébao* Collection \$200 - 300

Photo size reduced.



773. **YUAN: Zhi Zheng**, 1341-1368, AE 10 cash (28.27g), CD1359, H-19.118, 47mm, 'Phags-pa script above for Chinese cyclical date *ji hai*, dot and Chinese *shi* below, some weakness, Fine, R \$150 - 250

Photo size reduced.



776. **YUAN: Zhi Zheng**, 1341-1368, AE 1 qian 5 fen (58.00g), H-19.122, Zeno-20892 (this piece), *ji* above, denomination *yi qian wu fen* to left, *quan chao* ("equivalent in paper money") to right, VF, RRRR, ex Shèngbidébao Collection \$1,500 - 2,000

Photo size reduced.



774. **YUAN: Zhi Zheng**, 1341-1368, AE 5 fen (19.21g), H-19.120, Zeno-20892 (this piece), *ji* above, denomination *wu fen* to left, *quan chao* ("equivalent in paper money") to right, pleasing Fine, RRRR, ex Shèngbidébao Collection \$700 - 1,000

This and the following three lots are of a type that was cast during a time of economic reform circa 1350, when the attempt was made by Chancellor Toqto'a to replace smaller size coinage with paper money and these larger coins. Due to its inferior manufacture, the paper money soon became too troublesome to redeem and a widespread loss of confidence in the monetary system took hold, resulting in massive price inflation.

*The character *ji* is believed to stand for *jian lu* in Jiangxi Province.*



777. **YUAN: Zhi Zheng**, 1341-1368, AE 5 qian (160g), H-19.124, Zeno-1149 (this piece), *ji* above, denomination *wu qian* to left, *quan chao* ("equivalent in paper money") to right, moderate encrustation, bold VF, RRRR ex Shèngbidébao Collection \$1,500 - 2,000

Photo size reduced.



775. **YUAN: Zhi Zheng**, 1350-1368, AE cash (26.31g), Ji'an mint, Jiangxi Province, H-19.121, 50mm, *ji* above, *quan chao* (paper money equivalent) at right, *yi qian* at left on reverse, Fine, RRR ex Jiùjīnshān Collection \$1,750 - 2,250

Photo size reduced.



778. **YUAN: Long Feng**, rebel, 1355-1366, AE 3 cash (9.22g), H-19.132, small casting defect on obverse rim, VF, RRRR ex Shèngbidébao Collection \$600 - 800

Han Shantong, born in Yingzhou, Henan, was one of the early Red Turban rebellion leaders. He claimed to be the descendant of Emperor Huizong of Song (1082-1135), the last emperor of the Northern Song dynasty, and rebelled against the Mongol Yuan dynasty under the reign title of Long Feng. This is part of the so-called Dragon and Phoenix currency. A similar specimen in Stephen Album Auction 21 Lot 884 sold for \$1800.



779. **YUAN: Tian You**, rebel, 1354-1357, AE 3 cash (10.44g), H-19.137, Zeno-1899 (this piece), denomination above in seal script on reverse, lovely example, VF, RRR ex Shèngbidébao Collection \$400 - 500

Zhang Shicheng was one of the leaders of the Red Turban Rebellion in the late Yuan Dynasty China. Later he established the Kingdom of Dazhou with reigning name Tianyou. Chinese graffiti appears in the reverse field, including the denomination in Chinese characters for "three cash".



780. **YUAN: Tian Ding**, rebel, 1359-1360, AE cash (3.19g), H-19.142, Fine, S, ex Jiùjīnshān Collection \$100 - 150

In August 1351, Xu Shouhui worked with others to establish the rebel army of Red Turbans under the pretense of the Buddhist White Lotus Society. In the following months of the Red Turban Rebellion, they captured Qishui and made it the command center of the Red Turbans and the capital of the newly declared Empire of Tianwan, with himself as the emperor. Xu Shouhui used the period titles Tian Qi in 1358 and Tian Ding 1359-1360.



781. **YUAN: Tian Ding**, rebel, 1359-1360, AE 2 cash (5.57g), H-19.143, hairline flan crack, Fine, S ex Jiùjīnshān Collection \$100 - 150



782. **YUAN: Da Yi**, rebel, 1360-1361, AE cash (4.01g), H-19.145, Fine, S, ex Jiùjīnshān Collection \$100 - 150

Chen Youliang (Da Yi) was the founder of the insurgent state of Dahan in the late Yuan Dynasty period of Chinese history.



783. **YUAN: Da Yi**, rebel, 1360-1361, AE 2 cash (7.71g), H-19.146, very light encrustation as usual, VF ex Shèngbidébao Collection \$200 - 400



784. **YUAN: Da Yi**, rebel, 1360-1361, AE 3 cash (8.43g), H-19.147, Fine, ex Jiùjīnshān Collection \$100 - 150



785. **YUAN: Kai Yuan imitation**, 13th-14th century, AE charm (15.71g), H—, Zeno-6169 (this piece), based on the common Tang *kai yuan* cash coin, but much larger with typical Yuan style calligraphy, especially the characters, *yuan* and *bao*, VF ex Shèngbidébao Collection \$100 - 200

For further information, see the description on Zeno for this piece.



786. **YUAN: Kai Yuan imitation**, 13th-14th century, AE charm (22.17g), H—, Zeno-6170 (this piece), *bao* in seal script, otherwise based on the common Tang *kai yuan* cash coin, but much larger with typical Yuan style calligraphy, especially the character *yuan*, lovely VF, ex Shèngbidébao Collection \$100 - 200

For further information, see the description on Zeno for this piece.



787. **YUAN: Kai Yuan imitation**, 13th-14th century, AE charm (12.39g), H—, Zeno-6171 (this piece), based on the common Tang *kai yuan* cash coin, but much larger with typical Yuan style calligraphy, especially the character *yuan*, possibly later casting after Yuan, F-VF, ex Shèngbidébao Collection \$75 - 100

For further information, see the description on Zeno for this piece.



788. **YUAN: Anonymous**, 13th-14th century, AE temple coin (2.13g), Zeno-8461 (this piece), inscribed *jun chen sheng xian* ("Rulers and the Ministers are Saints and Sages") on obverse, *guo tai min an* ("Peaceful County and Safe People") on reverse, discussed on Zeno for this item, F-VF, **RRR**
ex Shèngbidébao Collection \$150 - 250



789. **YUAN: Anonymous**, 13th-14th century, AE temple coin (0.99g), inscribed *ri guang yue ming*, possibly an earlier issue of the Liao Dynasty (12th-13th century), Fine, **RRR**
ex Shèngbidébao Collection \$75 - 100



790. **YUAN: Anonymous**, early 14th century, AE temple coin (1.77g), inscribed *ding tian yuan bao*, style is typical of the 1300-1350 period, VF, **RRR**, ex Shèngbidébao Collection \$100 - 150



791. **YUAN: Anonymous**, early 14th century, AE temple coin (1.15g), inscribed *xiang hua gong yang*, style is typical of the 1300-1350 period, VF, **RRR**, ex Shèngbidébao Collection \$100 - 150



792. **YUAN: Anonymous**, 14th century, AE temple coin (1.14g), inscribed *ting zhi zhi bao*, similar to the issue of Ting You (1314-1320), but with *zhi* instead of *you*, bold VF, **RRR**
ex Shèngbidébao Collection \$100 - 150



793. **YUAN: Anonymous**, 14th century, AR temple coin (1.79g), Zeno-12005 (this piece), inscribed *fo fa seng bao*, F-VF, **RRR**
ex Shèngbidébao Collection \$75 - 100

Stated on Zeno: "Yuan Dynasty temple coin. Such coins are known only made of bronze. See He Lin's Catalogue of Chinese Charms No. 1047. This one is gold plated silver item, but gold is hardly visible. Reading is: top - bottom right - left. Not found in any accessible sources. This item made in silver is rare, may be unique."



794. **YUAN: Anonymous**, 14th Century, AE charm (14.92g), 31.5mm, *fo fa seng bao* (Three Treasures of Buddhism: Buddha, his doctrine and monks), **RRR**
ex Shèngbidébao Collection, Ma Dingxiang Collection \$400 - 500

A charm of the Yuan or perhaps Ming period. Although stylistically and in manufacturing style, it seems to belong more the to Yuan period.



795. **YUAN: Anonymous**, 14th century, AE 3 cash (9.77g), CD1358, Zeno-1203 (this piece), Chinese *wu xu* for year 1358 / Mongolian 'Phags-pa *shin* for year 1352, VF, **RR**
ex Shèngbidébao Collection \$150 - 250

Dated during the regnal period of Zhi Zheng (1341-1368), but perhaps struck by one of the many rebels opposed to Da Zhong from about 1350 onwards.

796. **YUAN: LOT** of 5 copper coins: Hartill-20.1 (VF); H-20.2 (VF); H-19.39 (2 pcs., Fine & VF); and H-19.46, ten cash in 'Phags-pa script, with extra crescent to lower right of obverse (choice VF), retail \$200, **lot of 5 pieces**,
ex Shèngbidébao Collection \$120 - 160



797. **NORTHERN YUAN: Xuan Guang**, ca. 1366-1388, AE temple coin (2.21g), Zeno-7619 (this piece), inscribed *xuan guang zhi bao*, plain reverse, listed on Zeno as a fantasy issue, but likely a contemporary issue, VF, **RRR**
ex Shèngbidébao Collection \$75 - 100



798. **NORTHERN YUAN: Xuan Guang**, ca. 1366-1388, AE temple coin (1.88g), Zeno-7620 (this piece), inscribed *xuan guang zhi bao*, 'Phags-pa *u* ("5") on reverse, listed on Zeno as a fantasy issue, but likely a contemporary issue, VF, **RRR**
ex Shèngbidébao Collection \$75 - 100

Uskhal Khan, born Tögüs Temür, was a Mongol Emperor of the Post-Imperial Mongolia. He was the last powerful khan of the Mongols until the reign of Dayan Khan.

799. **MING: LOT** of nearly all different types and varieties; **Jin** S-1083, **Ming** S-1137, S-1166 (2), S-1176, S-1181, S-1183, S-1185 (2), S-1199, S-1202, S-1228, **Nan Ming** S-1288, S-1291, S-1294, S-1308, S-1314, S-1319, S-1321, S-1328 (2), S-1332, S-1334, S-1335, S-1339, S-1340 (2), S-1345, S-1348, S-1351, a nice starter collection of Ming coins, all attributed and worked up in 2x2 holders, average circulated condition, retail value \$325, **lot of 30 coins**
\$150 - 250

China

800. **MING & QING:** LOT of 8 cash coins with much variety, all worked up in 2x2 holders including: **Tian Qi** (1621-1627) 10 cash H-20.229 (2), **Xing Chao** (1648-1657) AE 10 cash H-21.13, **Xian Feng** (1851-1861) 10 cash Board of Revenue (2), Board of Works, Jiangsi (2), and Zhejiang, average circulated condition, retail value \$475, **lot of 8 coins** \$200 - 300



801. **MING: Da Zhong**, 1361-1368, AE 3 cash (9.23g), H-20.23, plain reverse, VF, ex *Shèngbidébao Collection* \$75 - 100



802. **MING: Da Zhong**, 1361-1368, AE 3 cash (6.93g), H-20.32, character *zhe* above on reverse, for Zhejiang province mint, VF-EF ex *Shèngbidébao Collection* \$100 - 150



803. **MING: Da Zhong**, 1361-1368, AE 10 cash (20.08g), H-20.45, character *shi* above on reverse, for denomination, some very light encrustation, bold VF, ex *Shèngbidébao Collection* \$100 - 150



804. **MING: Da Zhong**, 1361-1368, AE 10 cash (27.94g), H-20.54, 46mm, character *ji* for Jinan mint above & *shi* ("10") below, bold VF, ex *Shèngbidébao Collection* \$200 - 300

Photo size reduced.



805. **MING: Da Zhong**, 1361-1368, AE 10 cash, H-20.45, *shih* above on reverse, Fine, **S** \$125 - 175



806. **MING: Da Zhong**, 1361-1368, AE 10 cash, Nanjing mint, Jiangsu Province, H-20.47, *jing* above on obverse, *shih* at right on reverse, Fine, **R** \$450 - 550

From an old Japanese collection.



807. **MING: Da Zhong**, 1361-1368, AE 10 cash, Hubei Province, H-20.50, 47mm, *e* above on obverse, *shih* below on reverse, a lovely specimen! Fine, **RR** \$1,500 - 2,000

From an old Japanese collection.

Photo size reduced.



808. **MING: Hong Wu**, 1368-1398, AE 3 cash (8.89g), Zhejiang Province, H-20.96, *zhe* above on reverse, Fine, **S** ex *Jiùjìnshān Collection* \$100 - 150



809. **MING: Hong Wu**, 1368-1398, AE 10 cash, Nanjing mint, Jiangsu Province, H-20.112, 46mm, *jing* above on obverse, *shih* at right on reverse, a lovely example! Fine, R \$325 - 425

*From an old Japanese collection.
Photo size reduced.*



812. **MING: Tian Qi**, 1621-1627, AE 10 cash, Xuanfu mint, Zhili province, H-20.232, 47mm, *fu* above on reverse, VF, R ex Jiùjìnshan Collection \$500 - 700

Photo size reduced.



810. **MING: Zheng De**, 1505-1521, AE charm, S-528, CCH-382., 56mm, dragon & phoenix type, the two facing each other with their heads at the bottom, F-VF \$100 - 150

*This is a popular legend for charms (hua qian) because zheng de has the auspicious meaning of "correct virtue" in Chinese, which is an appropriate wish for a newlywed couple. This piece was likely manufactured during the late Qing dynasty.
Photo size reduced.*



813. **NAN MING: Yong Chang**, 1644-1645, AE 5 cash (11.04g), H-21.4, 'er shui' yong, broad rims, Fine \$75 - 100

Li Tzu-ch'eng was the son of a village leader in Shansi. After a period of famine and high taxation, Li and his followers revolted. The end of the Ming Dynasty came in 1644 when Li succeeded in taking Peking. He assumed the reign title Yong Chang and declared himself emperor, upon which Chuang Lieh, the last Ming emperor, committed suicide.



811. **MING: Tian Qi**, 1621-1627, AE 10 cash, H-20.229, 48mm, *shi* (10 [cash]) above, *yi liang* ("one ounce") at right on reverse, small casting defect at the edge, VF \$50 - 75

Photo size reduced.



814. **NAN MING: Yong Li**, 1645-1659, AE 10 cash, H-21.78, 46mm, *yi fen* on reverse, narrow *yi* type, large flan, Fine \$60 - 90

Photo size reduced.



815. **NAN MING: Yong Li**, 1646-1659, AE cash (6.08g), H-21.81, seal script, F-VF \$75 - 100

China



816. **NAN MING: Li Yong**, 1674-1678, AE 10 cash (16.32g), H-21.101, *yi fen* on reverse, Fine \$100 - 150



821. **NAN MING: Yu Min**, 1674-1676, AE 100 cash (17.12g), H-21.124, *yi qian* (one fen [of silver]) on reverse, Fine \$100 - 150



817. **NAN MING: Zhao Wu**, 1678, AE 10 cash (7.57g), H-21.111, seal script, *yi fen* on reverse, a superb example! choice VF \$100 - 150



822. **NAN MING: Yu Min**, 1674-1676, AE 100 cash (17.36g), H-21.124, *yi qian* (one fen [of silver]) on reverse, pleasing Fine ex *Wéiduoliya Collection* \$100 - 150



818. **NAN MING: Zhao Wu**, 1678, AE 10 cash (11.43g), H-21.111, seal script, VF, ex *Wéiduoliya Collection* \$90 - 110

Qing Dynasty



823. **QING: Nurhachi**, 1616-1626, AE cash (7.74g), H-22.2, *abkai fulingga han jiha* in Manchu script, VF ex *Dan Bloxsom Collection* \$80 - 120



819. **NAN MING: Zhao Wu**, 1678, AE cash (9.73g), H-21.111, seal script, *yi fen* on reverse, attractive example, F-VF \$100 - 150



824. **QING: Qian Long**, 1736-1795, AE palace cash (5.65g), H-22.247, 28mm, "shanlong" type with special form of character *long*, cast 1796-1800, VF, R, ex *Wéiduoliya Collection* \$75 - 100



820. **NAN MING: Zhao Wu**, 1678, AE 10 cash (9.17g), H-21.111, seal script, F-VF, ex *Wéiduoliya Collection* \$75 - 100



825. **QING: Jia Qing**, 1796-1820, AE charm (5.78g), Guilin mint, Guangxi Province, with *gui* in Chinese at right and in Manchu at left, cast on large palace type flan, F-VF, R ex *Wéiduoliya Collection* \$75 - 100

Unpublished in both volumes of Classic Chinese Charms by Zheng Yiwei.



826. **QING: Dao Guang**, 1821-1850, AE palace cash (8.69g), H-22.584, 29mm, West branch mint, cast 1821-23, VF, R ex *Wéiduoliya* Collection \$75 - 100



830. **QING: Xian Feng**, 1851-1861, AE 50 cash, Board of Revenue mint, Peking, H-22.702, 55mm, East branch mint, cast June 1853 to February 1854, Fine, ex *Jiujinshan* Collection \$60 - 90

Photo size reduced.



827. **QING: Dao Guang**, 1821-1850, AE palace cash (23.72g), CCH-411, 43mm, curtain-hanging money, *tian xia tai ping* ("heaven below great peace"), light scratches on rims, VF ex *Wéiduoliya* Collection \$200 - 300

Palace cash may or may not be considered a type of amulet. These were made as New Year's gifts to people in the Imperial Palace, usually eunuchs and guards, who often hung them below lamps or curtains. Hartill, in "Qing Cash" (Royal Numismatic Society, 2003) agrees they were handed out as gifts in the Palace, but only upon the establishment of each new reign title, and were wrapped in red cloth.



831. **QING: Xian Feng**, 1851-1861, AE 50 cash, Board of Revenue mint, Peking, H-22.704, 56mm, North branch mint, cast June 1853 to February 1854, VF, ex *Jiujinshan* Collection \$80 - 120

Photo size reduced.



828. **QING: Dao Guang**, 1821-1850, AE palace cash, Board of Revenue mint, Peking, H-26.3, curtain-hanging money, *tian xia tai ping* ("heaven below great peace"), small flan crack & natural casting defect on edge, which is unusual for palace issues, F-VF, R, ex *Arthur W. Hummel, Jr. and Sr. Collection* \$300 - 400



832. **QING: Xian Feng**, 1851-1861, AE 50 cash (70.10g), H-22.704, 56mm, Board of Revenue mint, Peking, South Branch, cast June 1853 to February 1854, attractive F-VF \$75 - 100

Photo size reduced.



829. **QING: Xian Feng**, 1851-1861, AE charm (25.13g), Board of Revenue mint, Peking, H-22.690, East branch mint, possible private casting with loop for hanging, heavy and thick flan, VF, R, ex *Wéiduoliya* Collection \$75 - 100



833. **QING: Xian Feng**, 1851-1861, AE 100 cash, Board of Revenue mint, Peking, H-22.708, 52mm, West branch mint, cast March 1854 to July 1855, VF, ex *Jiujinshan* Collection \$60 - 90

Photo size reduced.

China



834. **QING: Xian Feng**, 1851-1861, AE 100 cash, Board of Revenue mint, Peking, H-22.708, 53mm, West branch mint, cast March 1854 to July 1855, VF, ex Jiujinshan Collection \$60 - 90

Photo size reduced.



837. **QING: Xian Feng**, 1851-1861, AE 500 cash, Board of Revenue mint, Peking, H-22.712, 59mm, West branch mint, cast March to August 1854, copper (tóng) color, F-VF ex Jiujinshan Collection \$800 - 1,200

Photo size reduced.



835. **QING: Xian Feng**, 1851-1861, AE 500 cash, Board of Revenue mint, Peking, H-22.712, 59mm, North branch mint, cast March to August 1854, copper (tóng) color, light green corrosion, VF-EF, ex Jiujinshan Collection \$800 - 1,200

Photo size reduced.



838. **QING: Xian Feng**, 1851-1861, AE 1000 cash, Board of Revenue mint, Peking, H-22.714, 59mm, North branch mint, cast March to August 1854, copper (tóng) color, lovely hand engraved fields and rims with dominoes tile pattern, superb charm made from a coin! VF-EF ex Jiujinshan Collection \$1,300 - 1,700

The earliest mention of dominoes is from the Song Dynasty in China, found in the text Former Events in Wulin. It is speculated that Italian missionaries in China may have brought the game to Europe in the 18th century.

Photo size reduced.



836. **QING: Xian Feng**, 1851-1861, AE 500 cash, Board of Revenue mint, Peking, H-22.712, 59mm, West branch mint, cast March to August 1854, copper (tóng) color, F-VF ex Jiujinshan Collection \$800 - 1,200

Photo size reduced.



839. **QING: Xian Feng**, 1851-1861, AE 1000 cash, Board of Revenue, Peking, H-22.714, Cr-1-11, 64mm, West Branch mint, cast March to August 1854 only, copper (tóng) color, VF \$1,500 - 2,000

Photo size reduced.



840. **QING: Xian Feng**, 1851-1861, AE 1000 cash, Board of Revenue mint, Peking, H-22.715, 59mm, North branch mint, cast March to August 1854, copper (tóng) color, a superb example! EF, ex Jiùjīnshān Collection \$1,750 - 2,250

Photo size reduced.



Photo size reduced.

844. **QING: Xian Feng**, 1851-1861, AE 100 cash, Board of Revenue mint, Peking, H-22.717, 48mm, Prince Qing Hui mint, 'sun & moon' above, cast May-August 1854, brass (huáng tóng) color, F-VF \$125 - 175

Photo size reduced.



841. **QING: Xian Feng**, 1851-1861, AE 50 cash, Board of Revenue mint, Peking, H-22.716, Prince Qing Hui mint, sun & moon mintmark, cast 1854, brass (huáng tóng) color, choice VF ex Jiùjīnshān Collection \$100 - 150



845. **QING: Xian Feng**, 1851-1861, AE 500 cash, Board of Revenue mint, Peking, H-22.720, 55mm, Prince Qing Hui mint, 'sun & moon' above, cast May-August 1854, brass (huáng tóng) color, VF, ex Jiùjīnshān Collection \$700 - 900

Photo size reduced.



842. **QING: Xian Feng**, 1851-1861, AE 100 cash, Board of Revenue mint, Peking, H-22.717, 49mm, Prince Qing Hui mint, 'sun & moon' above, cast May-August 1854, brass (huáng tóng) color, VF, ex Jiùjīnshān Collection \$250 - 350

Photo size reduced.



846. **QING: Xian Feng**, 1851-1861, AE 500 cash, Board of Revenue mint, Peking, H-22.720, 55mm, Prince Qing Hui mint, 'sun & moon' above, cast May-August 1854, brass (huáng tóng) color, VF, ex Jiùjīnshān Collection \$700 - 900

Photo size reduced.



843. **QING: Xian Feng**, 1851-1861, AE 100 cash, Board of Revenue mint, Peking, H-22.717, 50mm, Prince Qing Hui mint, 'sun & moon' above, cast May-August 1854, brass (huáng tóng) color, VF, ex Jiùjīnshān Collection \$250 - 350

China



847. **QING: Xian Feng**, 1851-1861, AE 500 cash, Board of Revenue mint, Peking, H-22.720, 57mm, Prince Qing Hui mint, 'sun & moon' mintmark, cast May-August 1854, copper (tóng) color, some rim knocks, F-VF, ex *Wéiduoliya Collection* \$500 - 700

Photo size reduced.



848. **QING: Xian Feng**, 1851-1861, AE 1000 cash, Board of Revenue mint, Peking, H-22.721, 60mm, Prince Qing Hui mint, 'sun & moon' mintmark, cast May-August 1854, brass (huáng tóng) color, a lovely example! VF-EF ex *Wéiduoliya Collection* \$800 - 1,000



849. **QING: Xian Feng**, 1851-1861, AE 1000 cash, Board of Revenue mint, Peking, H-22.721, 60mm, Prince Qing Hui mint, 'sun & moon' above, cast May-August 1854, brass (huáng tóng) color, a few minor rim bumps, VF ex *Jiùjīnshān Collection* \$1,300 - 1,700

Photo size reduced.



850. **QING: Xian Feng**, 1851-1861, iron 10 cash (15.36g), Board of Revenue mint, Peking, H-22.739, West branch mint, cast 1855-57, VF \$75 - 100



851. **QING: Xian Feng**, 1851-1861, iron 10 cash (21.06g), Board of Revenue mint, Peking, H-22.741, Pingding mint, cast 1855-59, VF \$75 - 100



852. **QING: Xian Feng**, 1851-1861, AE cash (2.08g), Board of Works, Peking, H-22.745var, square head two dot *tong*, with *boo yuwan* in Manchu doubled on reverse, small flan, thus likely a local coastal issue, very unusual, VF ex *Jiùjīnshān Collection* \$75 - 100



853. **QING: Xian Feng**, 1851-1861, AE 50 cash, Board of Works mint, Peking, H-22.759, 56mm, Old branch mint, cast November 1853 to March 1854, large size, brass (huáng tóng) color, EF, ex *Jiùjīnshān Collection* \$100 - 150

Photo size reduced.



854. **QING: Xian Feng**, 1851-1861, AE 50 cash, Board of Works mint, Peking, H-22.759, 56mm, Old branch mint, cast November 1853 to March 1854, large size, brass (huáng tóng) color, two small rim nicks, VF-EF ex *Jiùjīnshān Collection* \$100 - 150

Photo size reduced.



855. **QING: Xian Feng**, 1851-1861, AE 50 cash, Board of Works mint, Peking, H-22.759, 56mm, Old branch mint, cast November 1853 to March 1854, large size, brass (huáng tóng) color, choice VF \$100 - 150

Photo size reduced.



859. **QING: Xian Feng**, 1851-1861, AE 100 cash, Board of Works mint, Peking, H-22.762, 51mm, New branch mint, cast March 1854 to July 1855, brass (huáng tóng) color, tooling in fields, VF, ex Jiùjīnshān Collection \$75 - 100

Photo size reduced.



856. **QING: Xian Feng**, 1851-1861, AE 50 cash, Board of Works mint, Peking, H-22.759, 56mm, Old branch mint, cast November 1853 to March 1854, large size, brass (huáng tóng) color, VF, ex Wēiduōliya Collection \$75 - 100

Photo size reduced.



860. **QING: Xian Feng**, 1851-1861, AE 100 cash, Board of Works mint, Peking, H-22.762, 50mm, New branch mint, cast March 1854 to July 1855, brass (huáng tóng) color, Fine ex Jiùjīnshān Collection \$80 - 120

Photo size reduced.



857. **QING: Xian Feng**, 1851-1861, AE 50 cash, Board of Works mint, Peking, H-22.759, 57mm, Old branch mint, cast November 1853 to March 1854, large size, brass (huáng tóng) color, bent, Fine, ex Jiùjīnshān Collection \$50 - 70

Photo size reduced.



861. **QING: Xian Feng**, 1851-1861, AE 500 cash, Board of Works mint, Peking, H-22.764, 56mm, New branch mint, cast March to August 1854, copper (tóng) color, EF ex Jiùjīnshān Collection \$1,000 - 1,400

Photo size reduced.



858. **QING: Xian Feng**, 1851-1861, AE 50 cash, Board of Works mint, Peking, H-22.760, 43mm, New branch mint, cast 1854-55, brass (huáng tóng) color, F-VF \$75 - 100

China



862. **QING: Xian Feng**, 1851-1861, AE 500 cash, Board of Works mint, Peking, H-22.764, 56mm, New branch mint, cast March to August 1854, copper (tóng) color, F-VF ex Jiùjīnshān Collection \$450 - 550

Photo size reduced.



863. **QING: Xian Feng**, 1851-1861, AE 500 cash, Board of Works mint, Peking, H-22.765, 56mm, Old branch mint, cast March to August 1854, copper (tóng) color, rim nicks, superb quality! VF-EF, ex Jiùjīnshān Collection \$1,000 - 1,400

Photo size reduced.



864. **QING: Xian Feng**, 1851-1861, AE 500 cash, Board of Works mint, Peking, H-22.765, 55mm, Old branch mint, cast March to August 1854, copper (tóng) color, rim nicks, F-VF ex Jiùjīnshān Collection \$450 - 550

Photo size reduced.



865. **QING: Xian Feng**, 1851-1861, AE cash (8.11g), Fuzhou mint, Fujian Province, H-22.774, possibly a *tie mu* (bronze sample coin for iron), this example virtually as made, EF ex Jiùjīnshān Collection \$200 - 300



866. **QING: Xian Feng**, 1851-1861, AE cash (8.05g), Fuzhou mint, Fujian Province, H-22.774, possibly a *tie mu* (bronze sample coin for iron), this example virtually as made, EF ex Jiùjīnshān Collection \$200 - 300

For the heavy weight 1 cash please see also: ONS Newsletter 145, Summer 1995, page 11, "A small hoard of Hsien Feng cash of Fukien Province", by David E. Oxford. A group of 20 coins appeared in London, 1995.



867. **QING: Xian Feng**, 1851-1861, AE 10 cash, Fuzhou mint, Fujian Province, H-22.780, cast 1853-54, brass (huáng tóng) issue, VF, R, ex Jiùjīnshān Collection \$125 - 175



868. **QING: Xian Feng**, 1851-1861, AE 10 cash, Fuzhou mint, Fujian Province, H-22.780, cast 1853-54, brass (huáng tóng) issue, chopmark on reverse rim, Fine, ex Jiùjīnshān Collection \$75 - 100



869. **QING: Xian Feng**, 1851-1861, AE 20 cash, Fuzhou mint, Fujian Province, H-22.781, 46mm, tóng (copper) issue, cast 1853-54, VF, ex Jiùjīnshān Collection \$125 - 175

Photo size reduced.



870. **QING: Xian Feng**, 1851-1861, AE 20 cash, Fuzhou mint, Fujian Province, H-22.781, 47mm, *huáng tóng* (brass) issue, cast 1853-54, VF, ex *Jiùjīnshān* Collection \$125 - 175

Photo size reduced.



874. **QING: Xian Feng**, 1851-1861, AE 50 cash, Fuzhou mint, Fujian Province, H-22.782, 56mm, cast 1853-55, copper (*tóng*) color, chopmark on reverse rim, VF, ex *Jiùjīnshān* Collection \$450 - 550

Photo size reduced.



871. **QING: Xian Feng**, 1851-1861, AE 50 cash, Fuzhou mint, Fujian Province, H-22.782, 56mm, cast 1853-55, brass (*huáng tóng*) color, VF-EF, ex *Jiùjīnshān* Collection \$450 - 550

Photo size reduced.



875. **QING: Xian Feng**, 1851-1861, AE 50 cash, Fuzhou mint, Fujian Province, H-22.782, 58mm, cast 1853-1855, choice VF \$400 - 500

Photo size reduced.



872. **QING: Xian Feng**, 1851-1861, AE 50 cash, Fuzhou mint, Fujian Province, H-22.782, 57mm, cast 1853-55, copper (*tóng*) color, two chopmarks on reverse rim, another on obverse rim, VF ex *Jiùjīnshān* Collection \$450 - 550

Photo size reduced.



876. **QING: Xian Feng**, 1851-1861, AE 50 cash, Fuzhou mint, Fujian Province, H-22.782, 57mm, cast 1853-1855, copper (*tóng*) color, F-VF, ex *Wéiduo* Collection \$300 - 500

Photo size reduced.



873. **QING: Xian Feng**, 1851-1861, AE 50 cash, Fuzhou mint, Fujian Province, H-22.782, 56mm, cast 1853-55, copper (*tóng*) color, chopmark on reverse rim, another in obverse field, VF ex *Jiùjīnshān* Collection - *Photo size reduced* \$450 - 550



877. **QING: Xian Feng**, 1851-1861, AE 100 cash, Fuzhou mint, Fujian Province, H-22.784, 72mm, cast 1853-55, copper (*tóng*) color, chopmark on reverse rim, VF ex *Jiùjīnshān* Collection \$600 - 900

Photo size reduced.

China



878. **QING: Xian Feng**, 1851-1861, AE 100 cash, Fuzhou mint, Fujian Province, H-22.784, 71mm, cast 1853-55, copper (tóng) color, chopmark on reverse rim, VF ex Jiùjīnshān Collection \$600 - 900

Photo size reduced.



882. **QING: Xian Feng**, 1851-1861, AE 20 cash, Fuzhou mint, Fujian Province, H-22.794, 48mm, *yi liang ji zhong* incuse on rim, cast 1853-55, copper (tóng) color, VF-EF ex Jiùjīnshān Collection \$300 - 400

Photo size reduced.



879. **QING: Xian Feng**, 1851-1861, AE 5 cash (11.36g), Fuzhou mint, Fujian Province, H-22.792, *er qian wu fen* incuse on reverse rim, cast 1853-55, copper (tóng) color, VF, RRR ex Jiùjīnshān Collection \$500 - 700

The five cash denomination is exceptionally rare and this is the first example we have handled.



883. **QING: Xian Feng**, 1851-1861, AE 20 cash (43.71g), Fuzhou mint, Fujian Province, H-22.794, 46mm, *yi liang ji zhong* incuse on rim, cast 1853-55, copper (tóng) color, bold VF ex Wéidūoliyā Collection - Photo size reduced \$180 - 220



880. **QING: Xian Feng**, 1851-1861, AE 10 cash, Fuzhou mint, Fujian Province, H-22.793, *wu qian ji zhong* incuse in rim, cast 1853-55, copper (tóng) color, VF ex Jiùjīnshān Collection \$175 - 275



884. **QING: Xian Feng**, 1851-1861, AE 20 cash (33.95g), Fuzhou mint, Fujian Province, H-22.794, 46mm, *yi liang ji zhong* incuse on rim, cast 1853-55, copper (tóng) color, VF \$150 - 200

Photo size reduced.



881. **QING: Xian Feng**, 1851-1861, AE 10 cash (18.44g), Fuzhou mint, Fujian Province, H-22.793, *wu qian ji zhong* incuse in rim, cast 1853-55, copper (tóng) color, choice VF ex Wéidūoliyā Collection \$100 - 150



885. **QING: Xian Feng**, 1851-1861, AE 50 cash, Fuzhou mint, Fujian Province, H-22.795, 58mm, *er liang wu qian* incuse around rim, cast 1853-55, copper (tóng) color, VF ex Jiùjīnshān Collection - Photo size reduced \$600 - 900



886. **QING: Xian Feng**, 1851-1861, AE 50 cash, Fuzhou mint, Fujian Province, H-22.795, 57mm, *er liang wu qian* incuse around rim, cast 1853-55, copper (tóng) color, VF ex *Wéiduliyi* Collection \$500 - 700

Photo size reduced.



890. **QING: Xian Feng**, 1851-1861, AE 50 cash, Fuzhou mint, Fujian Province, H-22.799, 56mm, cast 1853-55, copper (tóng) color, four chopmarks on reverse rim, F-VF ex *Jiùjīnshān* Collection \$450 - 550

Photo size reduced.



887. **QING: Xian Feng**, 1851-1861, AE 50 cash, Fuzhou mint, Fujian Province, H-22.795, 57mm, *er liang wu qian* incuse around rim, cast 1853-55, copper (tóng) color, Fine ex *Jiùjīnshān* Collection \$400 - 600

Photo size reduced.



891. **QING: Xian Feng**, 1851-1861, AE 50 cash, Fuzhou mint, Fujian Province, H-22.799, 56mm, cast 1853-55, copper (tóng) color, two chopmarks on reverse rim, another on the obverse rim, Fine, ex *Jiùjīnshān* Collection \$350 - 450

Photo size reduced.



888. **QING: Xian Feng**, 1851-1861, AE 20 cash (37.10g), Fuzhou mint, Fujian Province, H-22.798, cast 1853-1855, copper (tóng) color, choice VF, ex *Wéiduliyi* Collection \$100 - 150



892. **QING: Xian Feng**, 1851-1861, AE 100 cash, Fuzhou mint, Fujian Province, H-22.800, 67mm, cast 1853-55, copper (tóng) color, Fine, ex *Jiùjīnshān* Collection \$500 - 700

Photo size reduced.



889. **QING: Xian Feng**, 1851-1861, AE 20 cash, Fuzhou mint, Fujian Province, H-22.798, 47mm, *zhong bao* type, cast 1853-55, copper (tóng) color, VF, ex *Jiùjīnshān* Collection \$100 - 150

Photo size reduced.



893. **QING: Xian Feng**, 1851-1861, AE 100 cash, Fuzhou mint, Fujian Province, H-22.800, 69mm, cast 1853-55, copper (tóng) color, Fine, ex *Jiùjīnshān* Collection - *Photo size reduced* \$500 - 700

China



894. **QING: Xian Feng**, 1851-1861, AE 50 cash, Gongchang mint, Gansu Province, H-22.807, 51mm, curved gong in Manchu script, cast 1854-57, F-VF, ex *Jiùjīnshān* Collection \$80 - 120

Photo size reduced.



898. **QING: Xian Feng**, 1851-1861, AE 50 cash, Guilin mint, Guangxi Province, H-22.826, 54mm, cast 1853-54, Fine, **S** ex *Wéidùoliya* Collection \$100 - 150

Photo size reduced.



895. **QING: Xian Feng**, 1851-1861, AE 10 cash (15.75g), Gongchang mint, Gansu Province, H-22.817, Song Dynasty style calligraphy, cast 1854-1861, Fine, **S** \$75 - 100



899. **QING: Xian Feng**, 1851-1861, AE 10 cash (17.88g), Kaifeng mint, Henan Province, H-22.846, cast 1854-55, gorgeous example, VF-EF, ex *Wéidùoliya* Collection \$75 - 100



896. **QING: Xian Feng**, 1851-1861, AE 10 cash, Guilin mint, Guangxi Province, H-22.825, cast 1853-54, F-VF, **S** ex *Jiùjīnshān* Collection \$75 - 100



900. **QING: Xian Feng**, 1851-1861, AE 50 cash, Kaifeng mint, Henan Province, H-22.847, cast 1854-55, VF ex *Jiùjīnshān* Collection \$75 - 100



897. **QING: Xian Feng**, 1851-1861, AE 10 cash, Guilin mint, Guangxi Province, H-22.825, cast 1853-54, F-VF, **S** ex *Jiùjīnshān* Collection \$75 - 100



901. **QING: Xian Feng**, 1851-1861, AE 100 cash, Kaifeng mint, Henan Province, H-22.849, 49mm, local type, cast 1854-55, EF ex *Jiùjīnshān* Collection \$80 - 120

Photo size reduced.



902. **QING: Xian Feng**, 1851-1861, AE 100 cash, Kaifeng mint, Henan Province, H-22.849, 49mm, local type, cast 1854-55, VF ex Jiujinshan Collection \$60 - 90

Photo size reduced.



906. **QING: Xian Feng**, 1851-1861, AE 50 cash, Wuchang mint, Hubei Province, H-22.859, 51mm, cast 1854-56, F-VF ex Jiujinshan Collection \$100 - 150

Photo size reduced.



903. **QING: Xian Feng**, 1851-1861, AE 10 cash, Wuchang mint, Hubei Province, H-22.858, with inverted crescent above mint name, cast 1854-56, VF, S, ex Jiujinshan Collection \$150 - 250



907. **QING: Xian Feng**, 1851-1861, AE 50 cash, Wuchang mint, Hubei Province, H-22.859, 51mm, cast 1854-56, casting defect on reverse rim, Fine, ex Jiujinshan Collection \$80 - 120

Photo size reduced.



904. **QING: Xian Feng**, 1851-1861, AE 10 cash, Wuchang mint, Hubei Province, H-22.858, with inverted crescent above mint name, cast 1854-56, VF, S, ex Jiujinshan Collection \$150 - 250



908. **QING: Xian Feng**, 1851-1861, AE 100 cash, Wuchang mint, Hubei Province, H-22.861, 55mm, cast 1854-56, variety with four stroke yuan, VF, ex Jiujinshan Collection \$100 - 150

Photo size reduced.



905. **QING: Xian Feng**, 1851-1861, AE 50 cash, Wuchang mint, Hubei Province, H-22.859, 50mm, cast 1854-56, choice VF ex Jiujinshan Collection \$125 - 175

Photo size reduced.



909. **QING: Xian Feng**, 1851-1861, AE 100 cash, Wuchang mint, Hubei Province, H-22.861, 55mm, cast 1854-56, variety with four stroke yuan, VF, ex Jiujinshan Collection \$100 - 150

Photo size reduced.

China



910. **QING: Xian Feng**, 1851-1861, AE 100 cash, Wuchang mint, Hubei Province, H-22.861, 56mm, cast 1854-56, variety with three stroke yuan, F-VF, ex Jiujinshan Collection \$100 - 150

Photo size reduced.



914. **QING: Xian Feng**, 1851-1861, AE 50 cash, Suzhou mint, Jiangsu Province, H-22.912, 50mm, cast 1854-55, large Manchu su at right, F-VF, ex Jiujinshan Collection \$80 - 120

Photo size reduced.



911. **QING: Xian Feng**, 1851-1861, AE 100 cash, Wuchang mint, Hubei Province, H-22.861, 51mm, cast 1854-56, Fine ex Jiujinshan Collection \$80 - 120

Photo size reduced.



915. **QING: Xian Feng**, 1851-1861, AE 100 cash, Suzhou mint, Jiangsu Province, H-22.913, 61mm, cast 1854-55, a superb example! VF-EF, ex Jiujinshan Collection \$175 - 225

Photo size reduced.



912. **QING: Xian Feng**, 1851-1861, AE 50 cash, Suzhou mint, Jiangsu Province, H-22.904, 50mm, cast 1854-55, VF ex Jiujinshan Collection \$80 - 120

Photo size reduced.



916. **QING: Xian Feng**, 1851-1861, AE 100 cash, Suzhou mint, Jiangsu Province, H-22.913, 60.5mm, cast 1854-55, VF ex Jiujinshan Collection \$100 - 150

Photo size reduced.



913. **QING: Xian Feng**, 1851-1861, AE 50 cash, Suzhou mint, Jiangsu Province, H-22.907, 54mm, cast 1854-55, VF ex Jiujinshan Collection \$100 - 150

Photo size reduced.



917. **QING: Xian Feng**, 1851-1861, AE 100 cash, Suzhou mint, Jiangsu Province, H-22.913, 60mm, cast 1854-55, VF ex Jiujinshan Collection \$100 - 150

Photo size reduced.



918. **QING: Xian Feng**, 1851-1861, AE 100 cash, Suzhou mint, Jiangsu Province, H-22.913, 61.5mm, cast 1854-55, couple of rim bumps and corrosion spots, VF ex *Jiùjīnshān* Collection \$80 - 120

Photo size reduced.



919. **QING: Xian Feng**, 1851-1861, AE 100 cash, Suzhou mint, Jiangsu Province, H-22.913, 59.5mm, cast 1854-55, a few corrosion spots on rim, Fine, ex *Jiùjīnshān* Collection \$80 - 120

Photo size reduced.



920. **QING: Xian Feng**, 1851-1861, AE 100 cash, Suzhou mint, Jiangsu Province, H-22.913, 57mm, cast 1854-55, Fine ex *Jiùjīnshān* Collection \$80 - 120

Photo size reduced.



921. **QING: Xian Feng**, 1851-1861, AE 100 cash, Suzhou mint, Jiangsu Province, H-22.913, 59.5mm, cast 1854-55, Fine ex *Jiùjīnshān* Collection \$80 - 120

Photo size reduced.



922. **QING: Xian Feng**, 1851-1861, AE 20 cash (18.91g), Jiangsu Province, H-22.915, type 5, cast 1854-55, Fine, R \$100 - 150



923. **QING: Xian Feng**, 1851-1861, AE 30 cash (26.30g), Jiangsu Province, H-22.916, 46mm, cast 1854-1855, attractive VF ex *Wéidūoliyā* Collection \$200 - 250

Photo size reduced.



924. **QING: Xian Feng**, 1851-1861, AE 30 cash, Suzhou mint, Jiangsu Province, H-22.916, 46mm, cast 1854-55, rare denomination, crude F-VF, ex *Jiùjīnshān* Collection \$200 - 300

Photo size reduced.



925. **QING: Xian Feng**, 1851-1861, AE 100 cash, Suzhou mint, Jiangsu Province, H-22.917, 60.5mm, cast 1854-1855, bold VF \$100 - 150

Photo size reduced.

China



926. **QING: Xian Feng**, 1851-1861, AE cash (6.89g), Suzhou mint, Jiangsu Province, H-22.924, Cr-16-4.2, large size coin cast with broad rims similar to official palace cash types, VF, RR ex *Wéiduoliya Collection* \$200 - 250



927. **QING: Xian Feng**, 1851-1861, AE 10 cash (14.59g), Nanchang mint, Jiangxi Province, H-22.927, narrow rims and elegant style, cast in 1854 only, VF \$75 - 100



928. **QING: Xian Feng**, 1851-1861, AE 50 cash (39.98g), H-22.931, 52mm, Nanchang mint, Jiangsi Province, attractive toning, VF \$75 - 100

Photo size reduced.



929. **QING: Xian Feng**, 1851-1861, AE 50 cash, Nanchang mint, Jiangxi Province, H-22.931, 53mm, cast 1855-60, VF ex *Jiujinshan Collection* \$60 - 90

Photo size reduced.



930. **QING: Xian Feng**, 1851-1861, AE 50 cash, Nanchang mint, Jiangxi province, H-22.931, 51mm, cast 1855-1860, F-VF ex *Jiujinshan Collection* \$60 - 90

Photo size reduced.



931. **QING: Xian Feng**, 1851-1861, AE 50 cash, Nanchang mint, Jiangxi province, H-22.931, 51mm, cast 1855-1860, F-VF ex *Jiujinshan Collection* \$60 - 90

Photo size reduced.



932. **QING: Xian Feng**, 1851-1861, AE 50 cash, Nanchang mint, Jiangxi province, H-22.931, 52mm, cast 1855-1860, F-VF ex *Jiujinshan Collection* \$60 - 90

Photo size reduced.



933. **QING: Xian Feng**, 1851-1861, AE 50 cash, Jinan mint, Shandong Province, H-22.934, cast 1854 only, rim knocks, Fine, R, ex *Jiujinshan Collection* \$100 - 150



934. **QING: Xian Feng**, 1851-1861, AE 10 cash, Taiyuan mint, Shanxi Province, H-22.942, small flan type, cast 1855-56, choice VF, R, ex Jiujinshan Collection \$100 - 150



938. **QING: Xian Feng**, 1851-1861, AE 100 cash, Xi'an mint, Shaanxi Province, H-22.959, 58mm, cast 1854-1855, extra thumb mark upper left of reverse field, VF \$100 - 150

Photo size reduced.



935. **QING: Xian Feng**, 1851-1861, AE 100 cash, Xi'an mint, Shaanxi Province, H-22.950, 58mm, cast in 1854, large size flan for yuan bao type, VF, ex Jiujinshan Collection \$100 - 150

Photo size reduced.



939. **QING: Xian Feng**, 1851-1861, AE 100 cash (64.99g), Xi'an mint, Shaanxi Province, H-22.959, 57mm, bold specimen, cast 1854-1855, VF \$100 - 140

Photo size reduced.



936. **QING: Xian Feng**, 1851-1861, AE 50 cash, Xi'an mint, Shaanxi Province, H-22.958, 52mm, cast 1854-55, VF ex Jiujinshan Collection \$70 - 90

Photo size reduced.



940. **QING: Xian Feng**, 1851-1861, AE 50 cash, Chengdu mint, Sichuan Province, H-22.980, 50mm, cast 1854-55, F-VF ex Jiujinshan Collection \$60 - 90

Photo size reduced.



937. **QING: Xian Feng**, 1851-1861, AE 50 cash, Xi'an mint, Shaanxi Province, H-22.958, 52mm, cast 1854-55, VF ex Jiujinshan Collection \$70 - 90

Photo size reduced.



941. **QING: Xian Feng**, 1851-1861, AE 100 cash, Chengdu mint in Sichuan Province, H-22.981, Cr-24-7, 56mm, cast 1853-1854, VF \$75 - 100

Photo size reduced.

China



942. **QING: Xian Feng**, 1851-1861, AE 100 cash, Chengdu mint, Sichuan Province, H-22.981, 56mm, cast 1854-55, F-VF ex Jiujinshan Collection \$70 - 100

Photo size reduced.



943. **QING: Xian Feng**, 1851-1861, AE 100 cash, Chengdu mint, Sichuan Province, H-22.981, 55mm, cast 1854-55, F-VF ex Jiujinshan Collection \$70 - 100

Photo size reduced.



944. **QING: Xian Feng**, 1851-1861, AE 50 cash, Baoding mint, Zhili Province, H-22.1052, 45mm, cast 1854-55, F-VF \$75 - 100



945. **QING: Xian Feng**, 1851-1861, AE 100 cash, Baoding mint, Zhili Province, H-22.1053, 49mm, cast 1854-55, VF ex Jiujinshan Collection \$70 - 100

Photo size reduced.



946. **QING: Xian Feng**, 1851-1861, iron 10 cash (20.40g), Zhili Province, H-22.1055, cast 1853-1855, lovely example EF \$100 - 150



947. **QING: Xian Feng**, 1851-1861, iron 10 cash (18.58g), Baoding mint, Zhili Province, H-22.1055, cast 1855-57, Fine \$75 - 100



948. **QING: Xian Feng**, 1851-1861, iron 10 cash (22.86g), Chengde mint, Zhili Province, H-22.1061, cast only in 1855, F-VF, R \$75 - 100



949. **QING: Xian Feng**, 1851-1861, AE 50 cash, Chengde mint, Zhili Province, H-22.1062, 46mm, cast 1854-55, VF-EF ex Jiujinshan Collection \$175 - 275

Photo size reduced.



950. **QING: Xian Feng**, 1851-1861, AE 10 cash, Jizhou mint, Zhili Province, H-22.1068, small flan type, cast 1854-55, VF-EF, S, ex Jiujinshan Collection \$100 - 150



951. **QING: Xian Feng**, 1851-1861, AE 50 cash (14.38g), Aksu mint, Xinjiang Province, H-22.1077, Cr-30-12, cast 1853-1859, "red cash" (hong qian) issue, attractive Fine ex *Wéiduoliya* Collection \$100 - 150



952. **QING: Xian Feng**, 1851-1861, AE 100 cash (21.47g), Aksu mint, Xinjiang Province, H-22.1078, Cr-30-13.1, cast 1854-1859, "red cash" (hong qian) issue, VF ex *Wéiduoliya* Collection \$150 - 200



953. **QING: Xian Feng**, 1851-1861, AE 4 cash (15.40g), Ili mint, Xinjiang Province, H-22.1085, Cr-28-5, cast 1855-1861, "red cash" (hong qian) issue, bold VF-EF, ex *Wéiduoliya* Collection, ex *Daniel Ching* Collection \$100 - 120

Cast in copper, valued at 4 pul, which was equal to 10 of the regulation brass (huang tong) cash coins at the time.



954. **QING: Xian Feng**, 1851-1861, AE 4 cash (14.33g), Ili mint, Xinjiang Province, H-22.1085, Cr-28-5, cast 1855-1861, "red cash" (hong qian) issue, bold VF ex *Wéiduoliya* Collection \$100 - 120



955. **QING: Xian Feng**, 1851-1861, AE 4 cash (15.76g), Ili, Xinjiang province, H-22.1085, cast 1855-1861, "red cash" (hong qian) issue, VF \$100 - 140



956. **QING: Xian Feng**, 1851-1861, AE 10 cash (12.79g), Ili mint, Xinjiang Province, H-22.1087, Cr-28-6, cast 1853-1855, F-VF, R, ex *Wéiduoliya* Collection \$150 - 200

Cast to the (Eastern) standard cash series in brass (huang tong) alloy.



957. **QING: Xian Feng**, 1851-1861, iron 10 cash (14.61g), Ili mint, Xinjiang province, H-22.1088, cast 1855, VF, RRR \$400 - 500

Iron was rarely cast or used in Xinjiang Province during the Qing dynasty and only this and another 4 cash of Xian Feng were produced during 1855, and production was likely stopped due to the refusal of the local populace to accept them in trade.



958. **QING: Xian Feng**, 1851-1861, AE 50 cash (33.01g), Ili mint, Xinjiang Province, H-22.1090, 46mm, cast 1854-1855, large characters, VF, ex *Wéiduoliya* Collection \$150 - 200

Since Ili was not on the Southern Xinjiang red cash (hong qian) system, all coins from this mint are cast in the standard brass (huang tong) alloy as was used in the remainder of China during the Taiping Rebellion.

Photo size reduced.

China



959. **QING: Xian Feng**, 1851-1861, AE 100 cash, Ili mint, Xinjiang Province, H-22.1091, 53mm, cast 1854-55, Fine ex *Jiujinshan Collection* \$175 - 225

Photo size reduced.



960. **QING: Xian Feng**, 1851-1861, AE 100 cash, Ili mint, Xinjiang Province, H-22.1091, 50.5mm, cast 1854-55, Very Good, **S** ex *Wéiduoliya Collection* \$150 - 250

Photo size reduced.



961. **QING: Xian Feng**, 1851-1861, AE 100 cash (20.64g), Kucha mint, Xinjiang Province, H-22.1101, Cr-33-11, cast 1853-1856, "red cash" (hong qian) issue, Uyghur mint name in large size, very pleasing example, VF, ex *Wéiduoliya Collection* \$180 - 250



962. **QING: Xian Feng**, 1851-1861, AE 100 cash (15.69g), Kucha, Xinjiang Province, H-22.1102, Cr-33-11, cast 1853-1856, "red cash" (hong qian) issue, Uyghur mint name in small size, Very Good, ex *Wéiduoliya Collection* \$100 - 120



963. **QING: Xian Feng**, 1851-1861, AE 50 cash, Yarkand mint, Xinjiang Province, H-22.1111, cast 1853-54, "red cash" (hong qian) issue, crude Fine, ex *Jiujinshan Collection* \$200 - 300



964. **QING: Xian Feng**, 1851-1861, AE 50 cash (14.83g), Yarkand mint, Xinjiang Province, H-22.1111, Cr-35-4, cast 1853-1854, er bao type, "red cash" (hong qian) issue, Fine ex *Wéiduoliya Collection* \$120 - 160



965. **QING: Xian Feng**, 1851-1861, AE 100 cash, Yarkand mint, Xinjiang Province, H-22.1113, 54mm, cast 1854-59, large size "red cash" (hong qian) issue, hole expertly repaired at obverse top, Very Good, **RR**, ex *Wéiduoliya Collection* \$150 - 250

Photo size reduced.



966. **QING: Xian Feng**, 1851-1861, AE 100 cash, Yarkand mint, Xinjiang Province, H-22.1114, 45mm, cast 1854-59, small size "red cash" (hong qian) issue, VG, **R** ex *Wéiduoliya Collection* \$150 - 250



967. **QING: Xian Feng**, 1851-1861, AE palace cash (25.37g), Board of Revenue mint, Peking, 44mm, curtain-hanging money, *tian xia tai ping* ("heaven below great peace"), square head two dot tong, VF, ex *Wéiduoliya* Collection \$300 - 500



968. **QING: Qi Xiang**, 1861, AE cash (7.13g), Board of Works mint, Peking, H-22.1122, Fine, RRR, ex *Jiujinshan* Collection \$500 - 700

First nian hao (reign title) of Tong Zhi. Very few coins minted with this reign title were produced and none were officially put into circulation. Likely a contemporary or later Qing Dynasty issue as the fabric and metal are consistent with the period.



969. **QING: Tong Zhi**, 1862-1874, AE 10 cash, Board of Works mint, Peking, H-22.1131, Cr-2-14, characters *tian xia tai ping* ("peace under heaven") engraved on the obverse rim between flowers, lotus flowers engraved on the reverse rim, coin made into charm, lovely! Fine, S \$75 - 100



970. **QING: Tong Zhi**, 1862-1874, AE 4 cash (14.49g), Ili mint, Xinjiang Province, H-22.1226, Cr-28-9, cast 1862-1866, 'red cash' (*hong qian*), bold VF, R, ex *Wéiduoliya* Collection \$100 - 150

Cast in copper, valued at 4 pul, which was equal to 10 of the standard brass (huang tong) cash at the time.



971. **QING: Tong Zhi**, 1862-1874, AE charm (15.71g), *tong zhi zhong bao / qi xiang tong bao*, crude VF, RRR ex *Jiujinshan* Collection \$150 - 250

Reverse of this charm contains the first nian hao (reign title) of Tong Zhi. Very few coins minted with this reign title were produced and none were officially put into circulation. Likely a contemporary or later Qing Dynasty issue as the fabric and metal are consistent with the period. Listed in 'Zhongguo guqian daji' book, volume 4, page 1739.



972. **QING: Tong Zhi**, 1862-1874, AE palace cash (25.13g), Board of Revenue mint, Peking, 42.5mm, curtain-hanging money, *tian xia tai ping* ("heaven below great peace"), closed head one dot tong, rim nick on reverse, Fine, ex *Wéiduoliya* Collection \$300 - 500



973. **QING: Tong Zhi**, 1862-1874, AE palace charm (6.58g), CCH-202, *fu shou* ("happiness and longevity") in seal script, choice VF, R, ex *Wéiduoliya* Collection \$75 - 100

Empress Dowager Cixi is said to have had these palace charms made to give out on special occasions and important birthdays. Empress Dowager Cixi held the Regency from 1861-1908.



974. **QING: Guang Xu**, 1875-1908, AE cash, Wuchang mint, Hubei Province, ND (1898), H-22.1355, Hsu-181, CCC-781, pattern type, nice old toning, Almost UNC to UNC., RR \$1,200 - 1,500



975. **QING: Guang Xu**, 1875-1908, AE 10 cash, Fengtien Province, ND (1899), Y-81, H-22.1378., NGC graded AU55 BR \$250 - 350
There is debate as to what year this coin was actually struck.



976. **QING: Guang Xu**, 1875-1908, AE charm, Guilin mint, Guangxi Province, CCH-367var, *gui* in Chinese & Manchu on reverse, smooth rim casting, choice VF, R, ex Jiujinshan Collection \$75 - 100

Zheng Yiwei and Chen Tielong in their book, 'Classic Chinese Charms', mention this type was cast in Sichuan Province. This is part of a 'poem cash' series. The original series was cast during the reign of Kang Xi and the 20 cash coin mints are always placed in the following order to create the poem, "Tóng fú lín dòng jiāng xuān yuán sù jì chāng nán níng hé guāng zhè tái guì shān yún zhāng."

Lots 976-995 are an almost complete set of the twenty pieces in this group, including 18 different characters and 2 duplicates.



977. **QING: Guang Xu**, 1875-1908, AE charm, Taiyuan mint, Shanxi Province, CCH-357var, *yuán* in Chinese & Manchu on reverse, smooth rim casting, VF, R, ex Jiujinshan Collection \$75 - 100



978. **QING: Guang Xu**, 1875-1908, AE charm, Hangzhou mint, Zhejiang Province, CCH-365var, *zhe* in Chinese & Manchu on reverse, smooth rim casting with edge flashing, VF, R, ex Jiujinshan Collection \$75 - 100



979. **QING: Guang Xu**, 1875-1908, AE charm, Xuanhua Garrison mint, Zhili Province, CCH-356var, *xuan* in Chinese & Manchu on reverse, smooth rim casting, VF, R, ex Jiujinshan Collection \$75 - 100



980. **QING: Guang Xu**, 1875-1908, AE charm, Linqing Garrison mint, Shandong Province, CCH-353var, *lin* in Chinese & Manchu on reverse, smooth rim casting, VF, R, ex Jiujinshan Collection \$75 - 100



981. **QING: Guang Xu**, 1875-1908, AE charm, Linqing Garrison mint, Shandong Province, CCH-353var, *lin* in Chinese & Manchu on reverse, smooth rim casting with edge flashing, flan crack, VF, R, ex Jiujinshan Collection \$75 - 100



982. **QING: Guang Xu**, 1875-1908, AE charm, Yunnan Province, CCH-369var, *yun* in Chinese & Manchu on reverse, smooth rim casting, VF, R, ex Jiujinshan Collection \$75 - 100



983. **QING: Guang Xu**, 1875-1908, AE charm, Changsha mint, Hunan Province, CCH-361var, *nan* in Chinese & Manchu on reverse, smooth rim casting, VF, R, ex Jiujinshan Collection \$75 - 100



984. **QING: Guang Xu**, 1875-1908, AE charm, Taiwan Province, CCH-366var, *tai* in Chinese & Manchu on reverse, smooth rim casting with edge flashing, VF, R, ex Jiujinshan Collection \$75 - 100



985. **QING: Guang Xu**, 1875-1908, AE charm, Nanchang mint, Jiangxi Province, CCH-355var, *jiang* in Chinese & Manchu on reverse, large characters, smooth rim, VF, R, ex Jiujinshan Collection \$75 - 100



986. **QING: Guang Xu**, 1875-1908, AE charm, Nanchang mint, Jiangxi Province, CCH-355var, *jiang* in Chinese & Manchu on reverse, small characters, smooth rim, VF, R, ex *Jiùjinshan Collection* \$75 - 100



987. **QING: Guang Xu**, 1875-1908, AE charm, Jinan mint, Shandong Province, CCH-354var, *dong* in Chinese & Manchu on reverse, smooth rim, VF, R, ex *Jiùjinshan Collection* \$75 - 100



988. **QING: Guang Xu**, 1875-1908, AE charm, Jiangning mint, Nanjing, CCH-363var, *ning* in Chinese & Manchu on reverse, small Manchu, porous rim, VF, R, ex *Jiùjinshan Collection* \$75 - 100



989. **QING: Guang Xu**, 1875-1908, AE charm, Datong Garrison mint, Shanxi Province, CCH-351var, *tung* in Chinese & Manchu on reverse, smooth rim, VF, R, ex *Jiùjinshan Collection* \$75 - 100



990. **QING: Guang Xu**, 1875-1908, AE charm, Suzhou mint, Jiangsu Province, CCH-358var, *su* in Chinese & Manchu on reverse, smooth rim, VF, R, ex *Jiùjinshan Collection* \$75 - 100



991. **QING: Guang Xu**, 1875-1908, AE charm, Zhangzhou mint, Fujian Province, CCH-370var, *zhang* in Chinese & Manchu on reverse, smooth rim casting, F-VF, R, ex *Jiùjinshan Collection* \$75 - 100



992. **QING: Guang Xu**, 1875-1908, AE charm, Fuzhou mint, Fujian Province, CCH-352var, *fu* in Chinese & Manchu on reverse, smooth rim casting, F-VF, R, ex *Jiùjinshan Collection* \$75 - 100



993. **QING: Guang Xu**, 1875-1908, AE charm, Xi'an mint, Shaanxi Province, CCH-368var, *shan* in Chinese & Manchu on reverse, smooth rim casting, F-VF, R, ex *Jiùjinshan Collection* \$75 - 100



994. **QING: Guang Xu**, 1875-1908, AE charm, Hangzhou mint, Zhejiang Province, CCH-365var, *zhe* in Chinese & Manchu on reverse, smooth rim casting, F-VF, R, ex *Jiùjinshan Collection* \$75 - 100

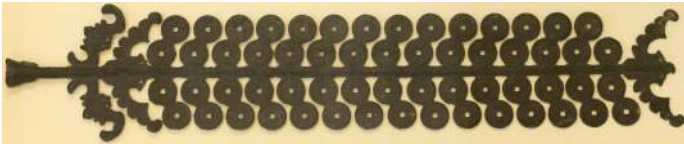


995. **QING: Guang Xu**, 1875-1908, AE charm, Taiwan Province, CCH-366var, *tai* in Chinese & Manchu on reverse, smooth rim casting, F-VF, R, ex *Jiùjinshan Collection* \$75 - 100



997. **QING:** AE 5 mace token (8.76g), CCH-647 var, *wu qian* ("five mace") / dragon & phoenix, VG-F
ex *Wéiduoliya* Collection \$75 - 100

Similar to a piece listed in the Classic Chinese Charms catalog, but with different denomination. Possibly cast in Hunan Province in the late Qing period and relates to so-called local "market money" (shi qian). It is also said that such market money appeared in China in mid-Qing and were popular in Hunan province at the end of Qing Dynasty to the beginning of Republican period. They were privately cast by large private banks/money shops (qian zhuang) in Hunan province for circulation and could be cashed in (exchanged). Such tokens were made mostly of copper/brass, but also made of lead, aluminum, and silver in a variety of denominations. In spite of the fact that such tokens are local money they are listed in all Chinese charms catalogs because they have auspicious inscriptions or symbols on one side.



996. **QING:** Xuan Tong, 1909-1911, AE cash, Board of Revenue mint, Peking, H-22.1516, North branch mint, cast in 1909, one coin missing, thus nearly complete casting 'money tree' of 59 coins, EF, RRRR, ex *Wéiduoliya* Collection \$10,000 - 14,000

This example is very similar to Lot 68 in the 1991 Singapore Spink-Taisei Auction 10. There were 23 money trees in that auction, all from the Mr. & Mrs. Byron White Collection. The only difference is that this example has three auspicious bats at the bottom of the tree and one at top, versus the opposite for the White Collection example.

Another coin tree of Guang Xu with 58 coins sold in the Stack's Bowers & Ponterio Sale 174, Lot 21070 for \$13,000; another similar to the Stack's item sold in Baldwin's in 2012 for \$12,000. This example is much rarer and more complete than the previously mentioned examples and housed in a custom wood display case.



998. **QING:** AR 5 mace bar (19.27g), uniface silver, legend appears to read *èr jiù yáng yín* with *shuangxi* ("double happiness") characters at top and bottom, F-VF, R
ex *Wéiduoliya* Collection \$75 - 100

Likely produced in the late Qing or early Min Guo (Republican) Era.



999. **QING:** AR charm (22.29g), hand-engraved, with Chinese inscription that means "hall full of jade, good luck" on floral background, hand punched central hole (as made), VF \$200 - 250



1000. **QING:** AE charm, CCH-841, 50mm, auspicious charm, *shou bi nan shan fu ru dong hai* ("May you live as long as the Southern Mountain and may your happiness be as the East sea") / deer: the symbol of career and salary; bat: the symbol of happiness; and peach: the symbol of long life, VF, S ex *Wéiduoliya Collection* \$75 - 100

Photo size reduced.



1001. **QING:** AE charm, 60mm, openwork charm, two dragons either side; the dragons appear to be chasing the tails of each other, VF \$75 - 100

Photo size reduced.



1002. **QING:** AE charm (5.72g), *long fei feng zhu* ("the dragon flies and the phoenix soars") / dragon & phoenix, Fine ex *Wéiduoliya Collection* \$75 - 100

The most prominent of all Chinese marriage symbols is the pairing of a dragon (long) and a phoenix (feng) which represents love and a happy marriage.

1003. **QING:** LOT of 240 coins; nearly all different types and varieties, of the following rulers: Nurhachi, one coin with tiny casting hole, Shun Zhi (17), Kang Xi (39), Yong Zheng (7), Qian Long (34), Jia Qing (21), Dao Guang (21), Xian Feng (11, including 6 iron), Tong Zhi (4), Guang Xu (22), Xuan Tong (1), plus a group of 62 mixed cash coins loose in a bag, a nice starter collection of Qing coins including some scarce mints and varieties! nearly all attributed and worked up in 2x2 holders, average circulated condition, retail value \$600, **lot of 240 coins** \$200 - 300

1004. **QING:** LOT of 41 coins; nearly all different types and varieties of 5 & 10 cash coins, **5 cash** Xian Feng; Gansu (3), Jiangsu (2), **10 cash** Xian Feng; Board of Revenue (7), Board of Works (2), Zhejiang (2), Hubei (1), Gansu (2), Jiangsi (1), Jiangsu (2), Guangxi (1), Guizhou (2), Shanxi (1), Shaanxi (1), Sichuan (2), Yunnan (2), Tong Zhi; Board of Revenue (1), Board of Works (1), Yunnan (1), Guang Xu; Board of Revenue (4), Board of Works (3), a nice starter collection including some scarce mints and varieties, all attributed and worked up in 2x2 holders, average circulated condition, retail value \$885, **lot of 41 coins** \$400 - 600

1005. **QING:** LOT of 50 coins; nearly all different types and varieties of Xinjiang including 'red cash' *hong qian* types; a nice starter collection including some scarce mints and varieties, all attributed and worked up in 2x2 holders, average circulated condition, retail value \$300, **lot of 50 coins** \$100 - 150



1006. **TAI PING REBELLION:** Tai Ping, 1850-1864, AE 10 cash (19.96g), Fuzhou mint, Fujian Province, H-23.4, *tian guo* (the Heavenly Kingdom) obverse, *sheng bao* (sacred currency) on reverse, cast 1853-55, VF, RR, ex *Jiùjīnshān Collection* \$500 - 700

A Very Rare 50 Cash Tai Ping Coin



1007. **TAI PING REBELLION:** Tai Ping, 1856-1860, AE 50 cash, H-23.9, 54mm, *tai ping tian guo* ("Taiping Heavenly Kingdom") on obverse and *sheng bao* ("sacred currency") on reverse, minor edge problems, very rare type! Good to Very Good, **RRR**, ex *Wéiduoliya Collection*, ex *Daniel K. E. Ching Sale, 1991, Lot 570, Krause plate coin* \$5,000 - 6,000

Photo size reduced.



1008. **TAI PING REBELLION:** Tai Ping, 1850-1864, AE 5 cash (7.71g), H-23.11, *tai ping tian guo* ("Taiping Heavenly Kingdom") obverse, *sheng bao* ("sacred currency") on reverse, cast 1860-62, flan crack, Fine, ex *Jiùjīnshān Collection* \$150 - 250



1009. **TAI PING REBELLION:** Tai Ping, 1850-1864, AE cash (4.77g), Shanghai, H-23.32, issue of the Small Swords Society (*Xiao Dao Hui*), dot above, crescent below on reverse, cast 1854-55, crude VF, **RRR**, ex *Jiùjīnshān Collection* \$300 - 500



1010. **TAI PING REBELLION: Tai Ping**, 1850-1864, AE cash (3.05g), Shanghai, H-23.32, issue of the Small Swords Society (*Xiao Dao Hui*), dot above, crescent below on reverse, cast 1854-55, crude VF, RRR, ex *Jiujinshan Collection* \$300 - 500

The Society's headquarters were in the Yuyuan Gardens of Shanghai. The organization was founded in the 1850s during the upheavals of the Taiping Rebellion by Liu Lichuan. He took the nien hao (reign title) of Tian Yun (heavenly movement). It was one of a number of rebel groups to arise during this period, either affiliated with or proclaiming support for the rebel Taiping administration. The name Xiao Dao ("Small Swords") refers to daggers used by warriors or martial artists in close combat. It is believed to be linked to triads. The society consisted mainly of natives from Guangdong and Fujian, including Li Shaoqing, Li Xianyun and Pan Yigu, directors of some of the huiguan or native place associations of Shanghai. Liu Lichuan was killed in February 1855. Those caught in possession of these coins were sent to trial and many were executed.



1011. **TAI PING REBELLION: Tai Ping**, 1850-1864, AE cash (3.66g), H-23.39, *tian chao tong bao* ("the coinage of the Heavenly Dynasty") obverse, *yong* inverted on reverse, cast 1858-64, VF, RRR, ex *Jiujinshan Collection* \$150 - 250

Very crude casting as typical with these late Tai Ping Rebellion local issues.



1012. **TAI PING REBELLION: Tai Ping**, 1850-1864, AE cash (3.39g), H-23.42, *huang di tong bao* ("the Emperor's coinage") on obverse and *zhe* on reverse, issue of the Small Swords Society (*Xiao Dao Hui*), cast 1854-55, VF, RR ex *Jiujinshan Collection* \$250 - 350



1013. **TAI PING REBELLION: Tai Ping**, 1850-1864, AE charm (2.89g), *tai ping yi tong* ("peaceful unification") / *tian zi wan nian* ("may the Emperor [son of heaven] live for a myriad [10,000] of years"), two natural casting holes and other flan defects, Fine, RR, ex *Jiujinshan Collection* \$100 - 200

*Casting style and calligraphy would likely place production of this charm during the Tai Ping Rebellion. Unpublished in both volumes of *Classic Chinese Charms* by Zheng Yiwei and Chen Tielong.*



1014. **TAI PING REBELLION: Tai Ping**, 1850-1864, AE local cash (1.15g), *tian guo tai ping* ("heavenly kingdom of Taiping"), reverse appears to be blundered inverted Manchu characters for Fujian and Board of Revenue, likely a local coastal private contemporary issue, crude VG-F, ex *Jiujinshan Collection* \$75 - 100

End of Session B